



**aarvin**  
international  
Your trusted back office in India

## Integrated component supplier for Switchgear & Power industry

- Supply true value components for switchgears & electric installations
- Manufacture panel accessories
- Develop bespoke components
- Undertake contract manufacturing

Your trusted back office in India



## ABOUT US

Established in the year 2000, Aarvin International, an ISO certified company is an engineering organisation dedicated to development, manufacturing and sourcing of switchgears and electro mechanical components for electrical installation.

Our team of engineers has vast experience and hands on knowledge of developing tools, moulds, dies and fixtures. We undertake development of components made out of MS, Stainless steel; Brass, Nylon, Polyamide, DMC, SMC, Zinc and Aluminum die casting among others encompassing a wide range of products used in LV/MV switchgear applications.

We also have 'Sourcing and Branding' access in India to existing reputed manufacturers for products such as::

- MCB
- Change over Switches and Isolators
- Contactors
- Push Buttons, Control Accessories

Compliance with international standards and specification is assured. Product certification from independent test laboratory can also be obtained on cost basis.

**Aarvin International** is head-quartered in Gurgaon - India, the hub of most multinational companies and manufacturing units of premium international brands and about 20 kms from New Delhi's international airport. We have a manufacturing facility in Faridabad and a new unit in Bawal Haryana with an area of 10,000 sq feet. We export to Canada, UK, Europe, Australia, the Middle East, Malaysia and Sri Lanka among others.

### VISION & MISSION:

To facilitate globally competitive Electro-Mechanical Components for the Switchgear Industry.

### CORE VALUES:

Our team of professionals and engineers are committed to deliver customized products and solutions that are in sync with customer requirements. Our core objectives are:

- Complete transparency
- Customer loyalty
- Conformance to international standards

### QUALITY POLICY:

'Aarvin International' is committed to provide high quality and value of products and services. Its endeavour has been to achieve the highest degree of customer satisfaction.

The organisation is well aware of the exacting standards that are internationally required to sustain growth in business and the importance of strictly adhering to a set of quality policy and rules. Our quality policy can be stated as follows:

- Ensuring procurement of high quality of raw materials
- Strict adherence to laid down processes and procedures
- Complying with the requirements of the customers and deliver what is promised on time

### OUR SERVICES :

Suppliers of true value components and services to our customers in the Electro-Mechanical engineering field related to switchgears and electrical installations, meeting highest quality standards and international specs.

Manufacturers of panel accessories for use in Industrial Enclosures.

Develop components of Aluminium, Zinc, Stainless Steel, Brass, MS, DMC, SMC and Copper as per customer design and specs.

Procure LV/MV electrical & mechanical components on our customer's behalf.

Contract manufacturing of components and assemblies.

### OUR BUSINESS PHILOSOPHY

Delivering world class products meeting international standards at competitive prices, customers' loyalty, total transparency and zero deviation from our commitments form the core of our business philosophy.





## Switch Board / Panel Accessories

### DMC AND SMC INSULATORS

DMC Insulators are available in various shapes like conical, hexagonal, cylindrical and drum with heavy duty 3 step hexagonal inserts to ensure high torque withstandability, eliminate slippage on tightening and application of high quality polyester resin which is non hygroscopic and adequately cured, makes the product free from chipping and imparts adequate mechanical strength to withstand high fault levels besides maintaining required dielectric strength. TPN busbar supports form a part of the range.



CYLINDRICAL  
DMC INSULATOR



CYLINDRICAL  
DMC INSULATOR  
WITH 2 INSERTS



DRUM TYPE  
DMC INSULATOR  
WITH HD INSERT



DMC INSULATOR



DRUM TYPE  
DMC INSULATOR



CONICAL TYPE  
DMC INSULATOR WITH  
HEAVY DUTY INSERT

### COPPER FLEXIBLE/BRAID

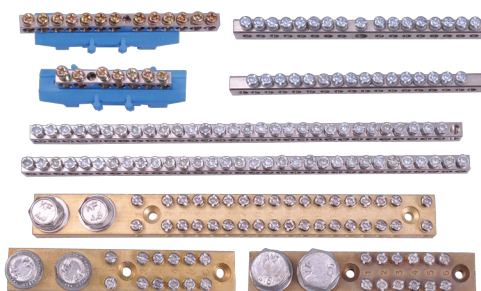
Copper flexible connections are manufactured using fine Copper wires of specified gauge as per customer specifications and drawings with or without copper lugs. Available in strips and rolls. These are primarily used in switchboard applications and bus ducts, transformers and heat shrinkable cable jointing kits.



COPPER BRAID

### BRASS NEUTRAL LINKS/EARTH LINKS

These are made out of extruded Brass with MS/Brass screws. Tin, zinc, nickel and chromium plated versions are available in cross sections and lengths upto 1m.



NEUTRAL LINKS



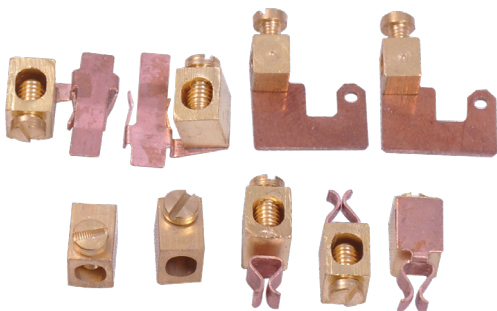
INSERT



## Switch Board / Panel Accessories

### BRASS PRECISION COMPONENTS

Special Brass components which require high precision, tolerance and find application in electric wiring devices.



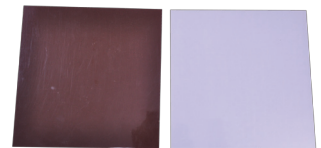
PRECISION BRASS COMPONENTS

### HEAT SHRINKABLE RUBBER SLEEVES

These sleeves are flame retardant and self extinguishing. They've a shrink ratio of 2:1 and are free of halogens. Sleeves are available in black, white, yellow, red, blue, green, clear and yellow/green and are RohS compliant. Corrosion resistant sleeves are UV stabilized.



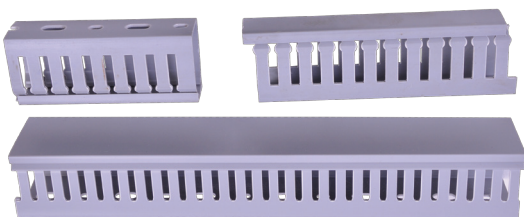
HEAT SHRINKABLE RUBBER SLEEVES



BAKELITE SHEET

### PVC TRUNKING

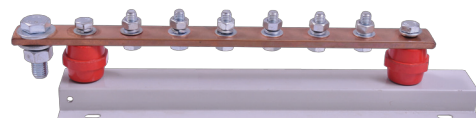
Trunking meeting CE requirements with required flexibility and fine finish are available in below mentioned sizes upto 2m long in RAL 7032 shade other colors also available on request subject to MOQ.



PVC TRUNKING - SLOTTED

### UK EARTHING BAR

Custom built Copper earthing bar mounted on DIN channel with DMC insulators on either side are manufactured as per customer drawings.



UK EARTH BAR



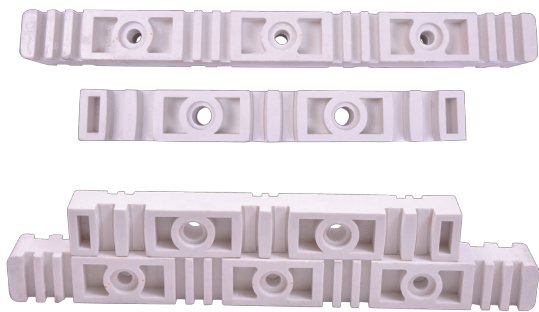
DIN CHANNEL - SLOTTED





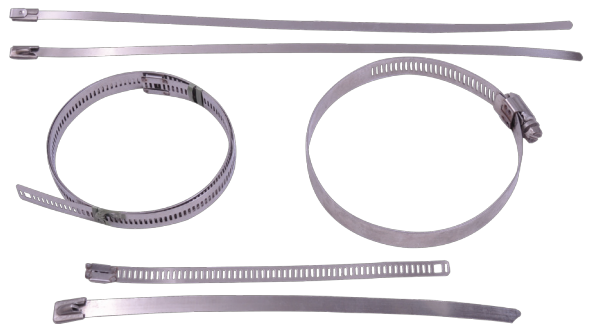
## Switch Board / Panel Accessories

SMC INSULATORS



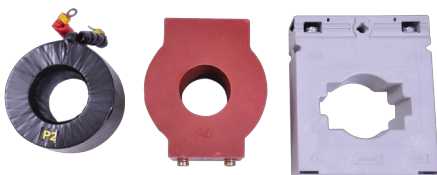
SMC INSULATORS

SS CABLE TIE



SS CABLE TIE

CT - TAPEBOUND, RESINCAST, ABS

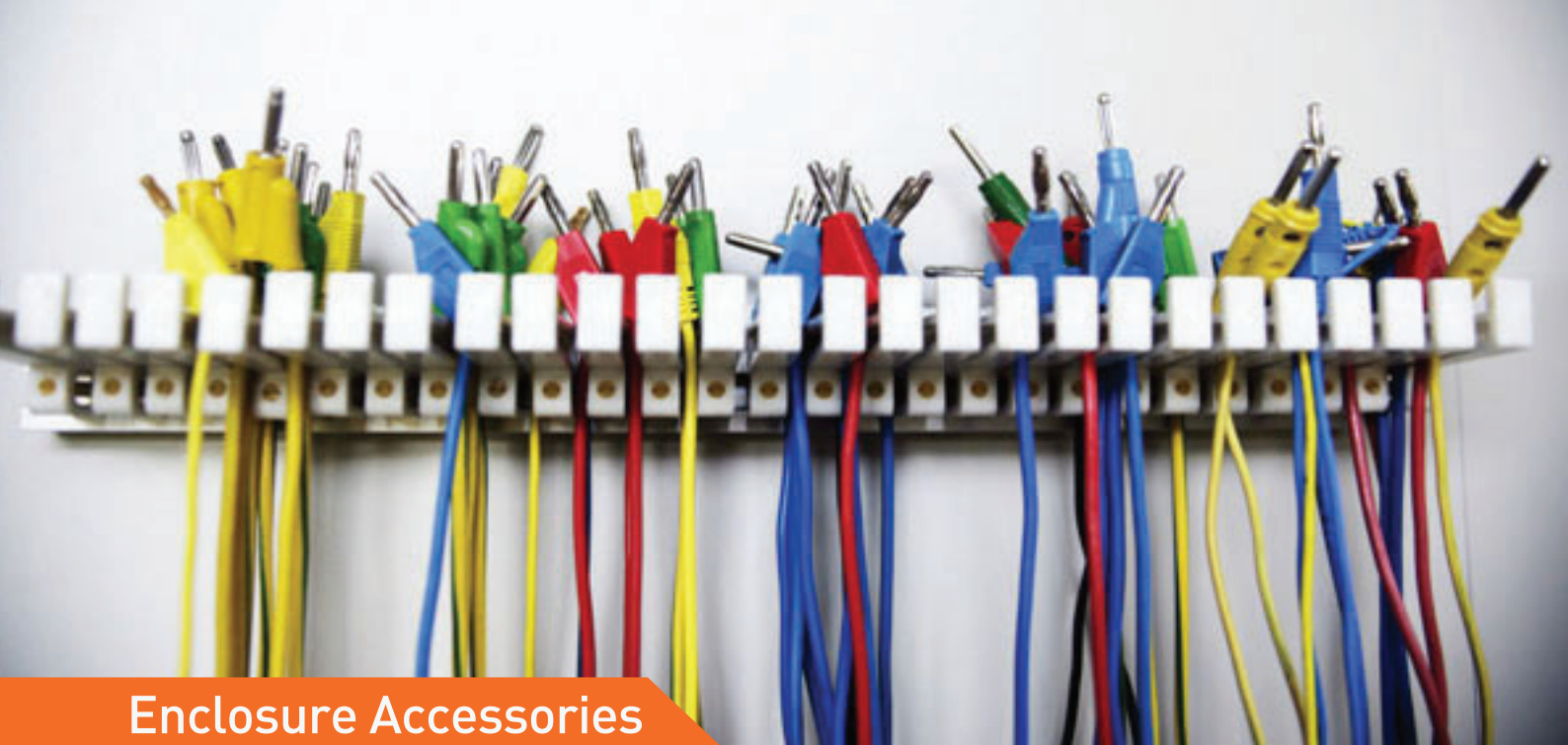


CT-TAPEBOUND, RESINCAST, ABS

NEUTRAL BASE



NEUTRAL BASE



## Enclosure Accessories

### QUARTER TURN LOCK WITH METAL KEY

Zinc die cast quarter turn locks with cam suitable for 22.5 mm cutout with locknut and cam length of 20, 25, 30 etc. Choice of inserts ranges from triangular to 2 bit and square.



A HEAK-01



A KL-2501



AKL19-1



A PK-01



A N-LOCK

### 3 POINT LOCK/SWING HANDLE LOCK

Swing handle lock with option of pin cylinder lock in full zinc die cast metal body, black powder coated completed with rod guide, bush and round rod with rollers, cam and zinc adapters.



SWING HANDLE LOCK  
WITH METAL HANDLE

### L AND T HANDLE LOCK

Zinc die cast L and T handles, with or without lock, complete with cam, adapters fully chrome plated.



L-HANDLE LOCK



T-HANDLE LOCK

### FULL METAL SWING HANDLE LOCK

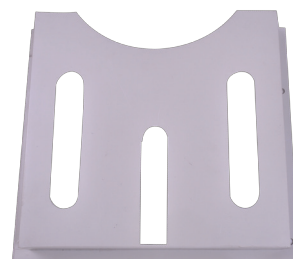
Zinc die cast black powder coated with pin cylinder lock with cam, rod guide, adapter and round rod.



FULL METAL SWING HANDLE  
WITH PIN CYLINDER LOCK

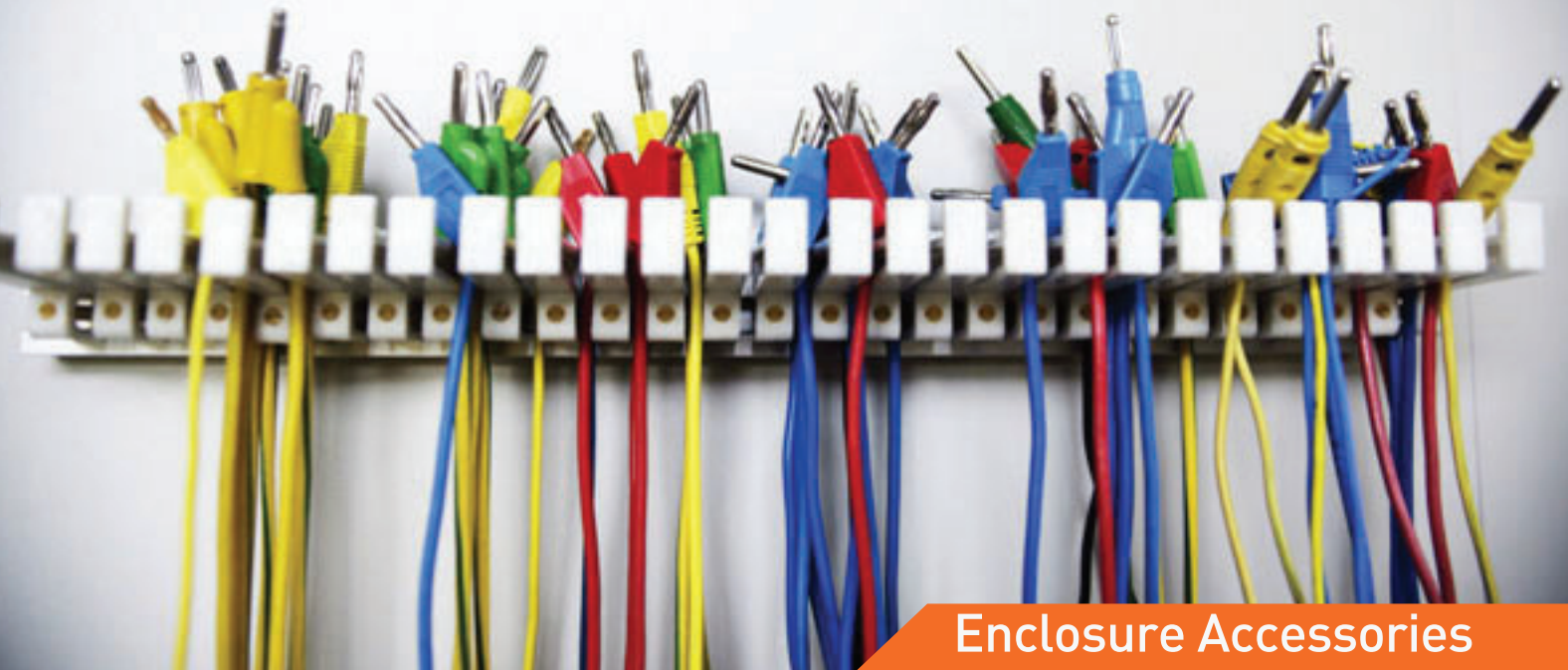
### DOCUMENT HOLDER

Document Holders are offered in size A4 and A5 in RAL7032.



DOCUMENT HOLDER





## Enclosure Accessories

### PIN CYLINDER LOCK

It's available as part of swing handle assembly.



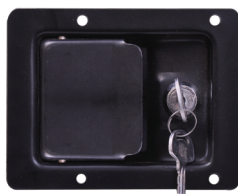
PIN CYLINDER LOCKS

### GENERATOR LOCK

Slam lock for generator canopies in SS with or without padlocking arrangement and in MS black powder coated version.



SLAM LOCK - SS



MS SLAM LOCK

### NYLON QUARTER TURN LOCKS

Nylon quarter turn locks with MS/Nylon cam and Nylon key suitable for 22.5 mm cutout



QTL WITH NYLON BODY



NYLON LOCK-UK



NYLON LOCK-UK



NYLON ROD GUIDES

### NYLON LOCK WITH COLLAPSIBLE KNOB

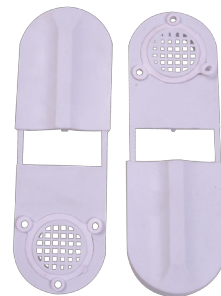
Nylon lock with collapsible knob and nylon cam suitable for 22.5 mm dia.



CAM FOR NYLON LOCK UK 01

### AIRVENT

This is available in RAL7032 with gasket for use in industrial enclosures.



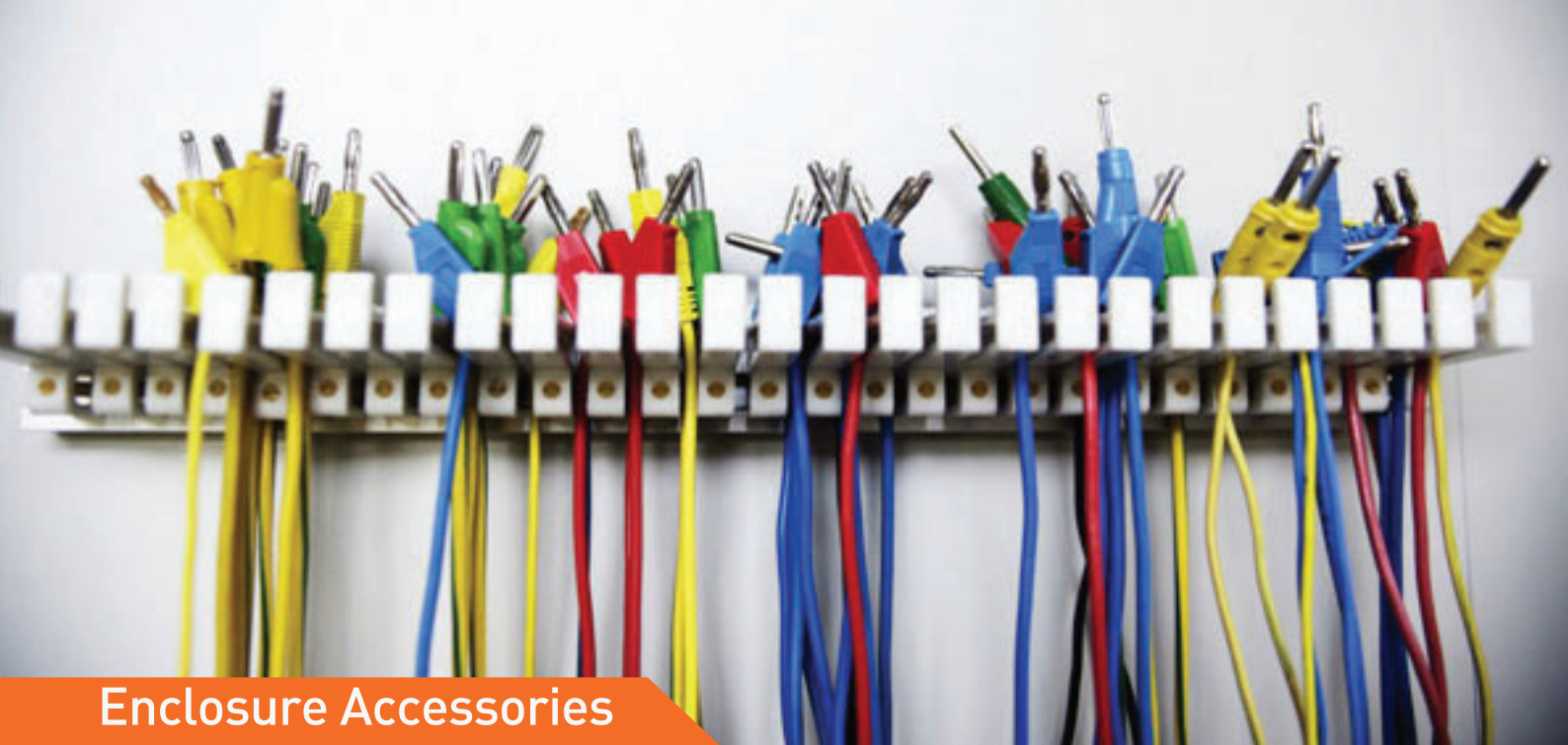
AIR VENT

### FILTERS

It is available in RAL7032 in following sizes given in the Extra Details section.



FILTERS

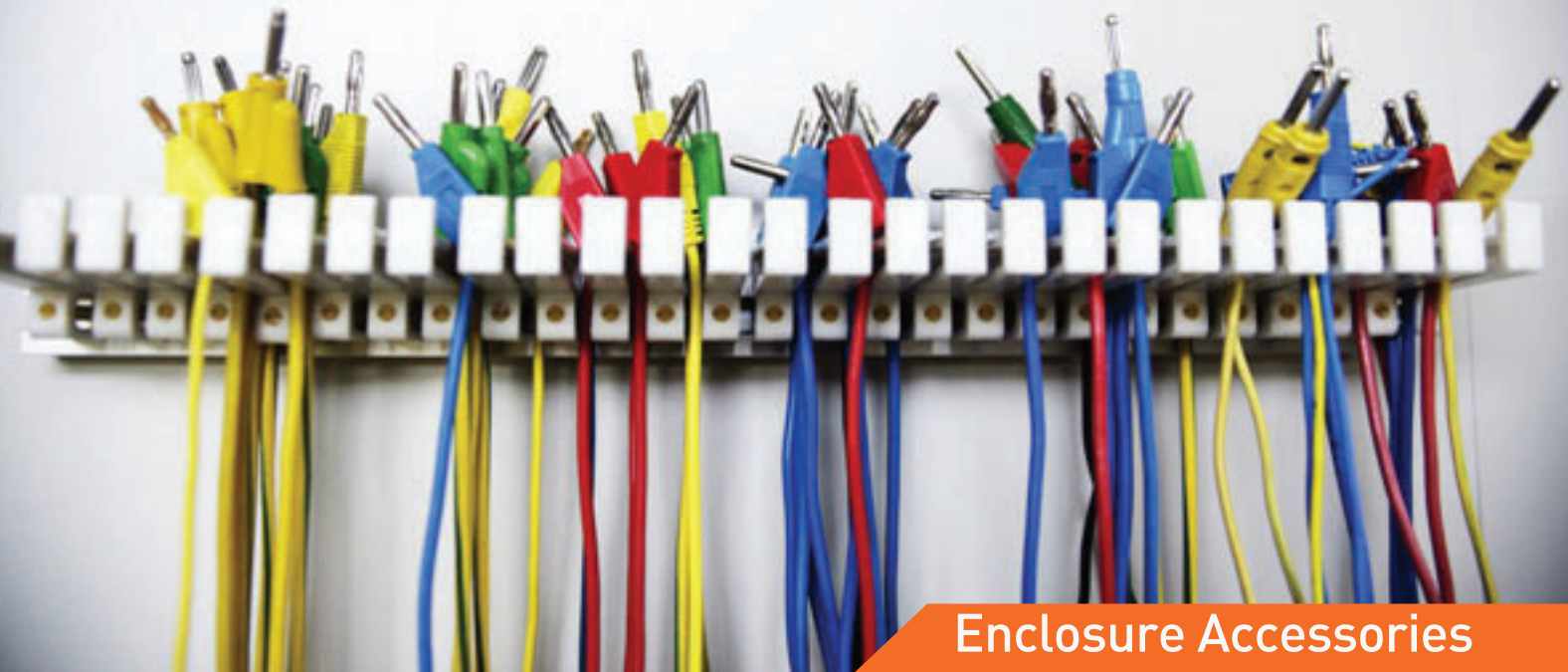


# Enclosure Accessories

## LOCKS







## Enclosure Accessories

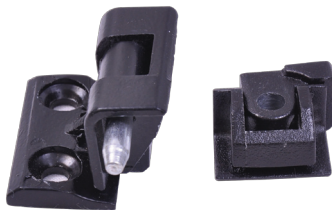
### ZINC DIE CAST HINGE

Black powder coated zinc die cast hinge. AHN005



A-SMALL (AHN-005)

Black powder coated zinc die cast hinge with pin. AHN030



AB16(AHN-030)

Black powder coated zinc die cast hinge with 4 nos inbuilt studs of M8x25CSK size 60 mm x 60 mm suitable for generator canopies/ outdoor enclosures. AHN040



DIE CAST HINGE WITH STUDS-60X60, 60X80 (LH,RH)



ZINC DIE CAST PIANO HINGE- 50MM

Black powder coated zinc die cast hinge with 4 nos inbuilt studs of M8x25CSK size 60 mm x80 mm suitable for generator canopies/ outdoor enclosures available in LH and RH versions.AHN041



ZINC DIE CAST HINGE WITH 4 INBUILT STUDS M8X25

40 mm,50 mm,60 mm zinc die cast with or without stud-AH40/ AHS40/ AH50/ AHS50/ AH60/ AHS60



HINGES WITH STUDS-40,50,60



AH-60



ZINC DIE CAST HINGE - PLAIN



Male Female Hinge die cast suitable for feeder pillars-AMP01

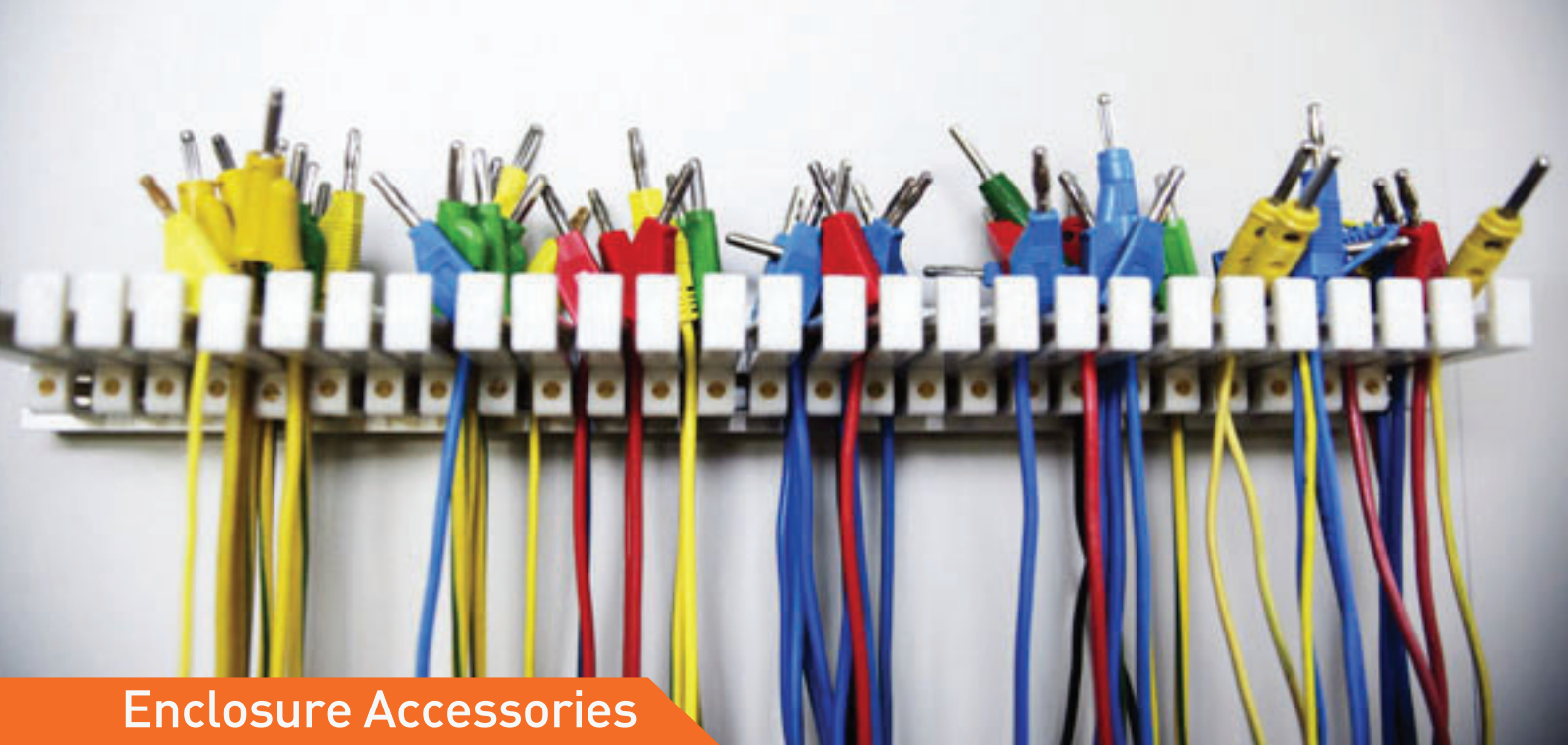


A MP-01

AHN-014 Brass hinge with SS pin-chrome plated



BRASS HINGE WITH SS PIN



# Enclosure Accessories

## HINGES

Various types of Hinges for industrial enclosure applications



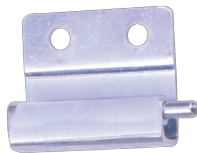
AHN-037



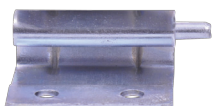
AHN-032



MS CONCEALED  
HINGE-20 MM



MS HINGE-RH,LH



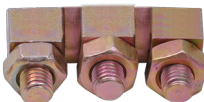
MS HINGE-RH&LH



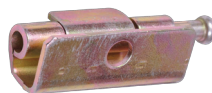
AHN-010



AHN-008



A HN-031



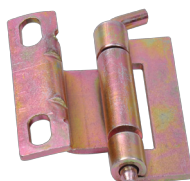
AHN-012



AHN-012B



A HS-60



A HN-002



AHA-01



AHN-03A



HEAVY DUTY HINGE-  
AHN091



A HN-003



AHN-004



HEAVY DUTY  
HINGE-AHN090



ZINC  
WINDOW HINGE

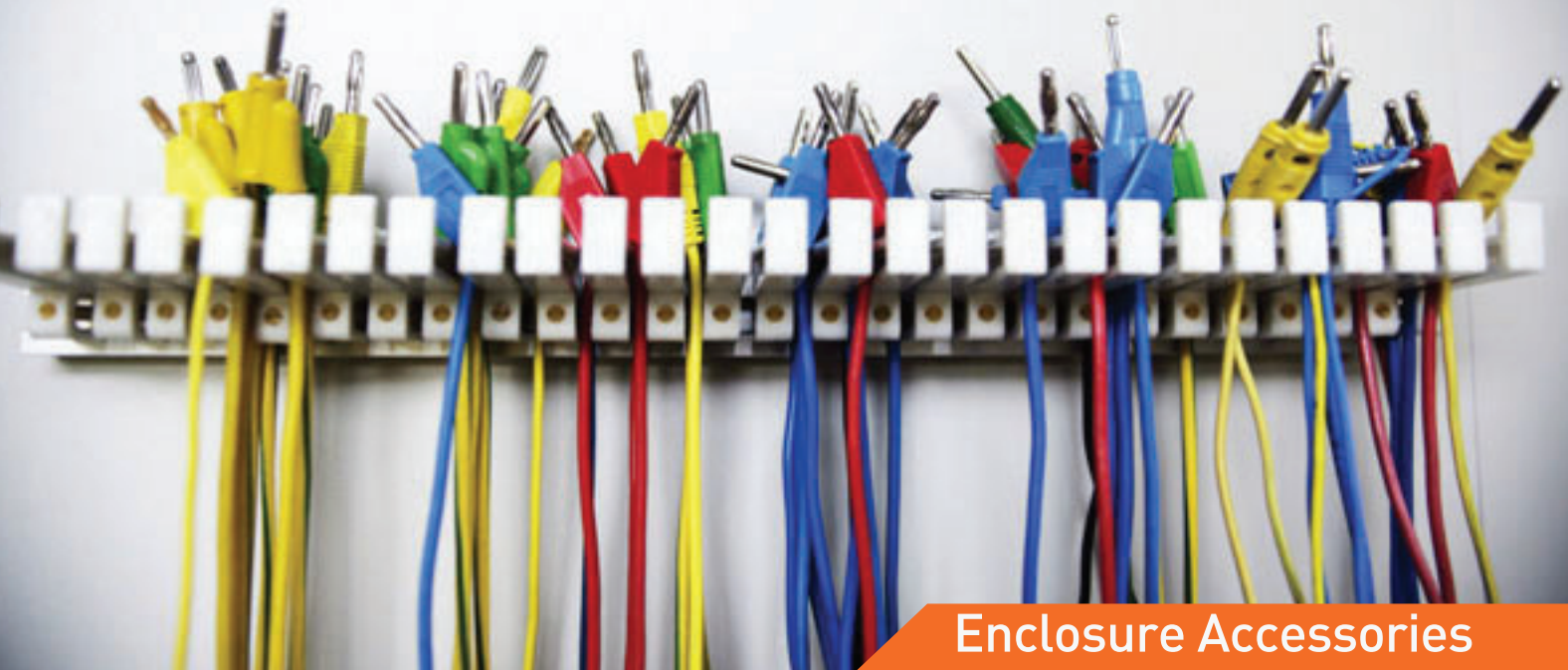


SS HINGE - 6 HOLE



SS HINGE

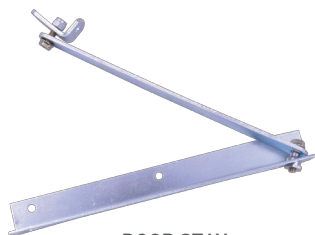




## Enclosure Accessories

### DOORSTAY

Heavy duty doorstay manufactured using 3mm sheet to impart mechanical strength with trivalent finish. Also available in stainless steel version. They find utilization in feeder pillars and other heavy enclosures.



DOOR STAY

### DIN CHANNEL

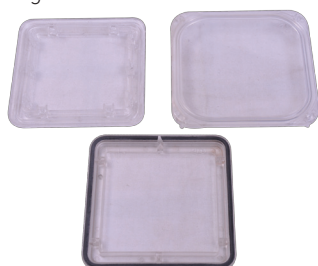
Slotted/unslotted DIN channel with white/ yellow passivation in lengths upto 2m with trivalent finish in various sizes such as 35x7.5x1 mm, etc.



DIN CHANNEL

### METER GLASS

96x96 mm meter glass appropriate for 92x92 mm cutout using polycarbonate (UV resistant) and is available in snap fit as well as screw mounting version.



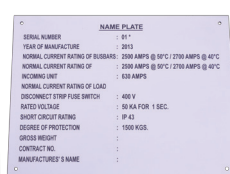
METER GLASS

### NAMEPLATES

Custom built artistically crafted and aesthetically pleasing nameplates suitable for withstanding UV exposure in SS, MS and Aluminum as per specifications.



DANGER PLATE



NAME PLATE



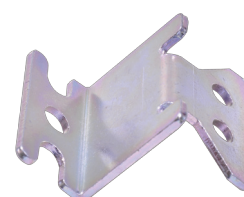
LOGO PLATE

### WALL MOUNTING BRACKET

MS wall mounted bracket available in white/ yellow passivation with trivalent finish.



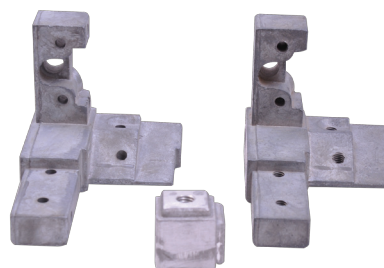
WALL MOUNTING BRACKET



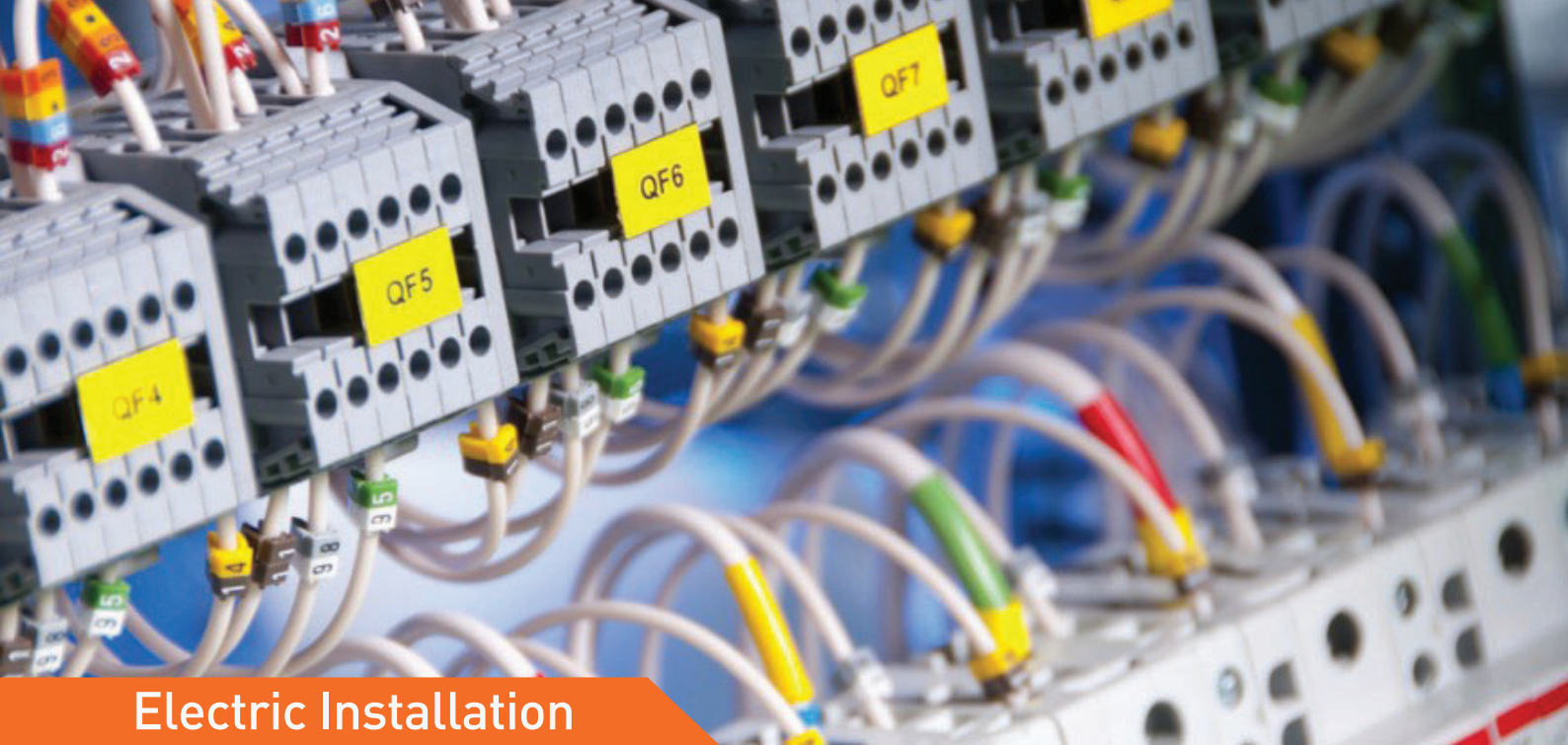
WALL MOUNTING CLAMP

### CORNER BLOCKS

Custom made zinc die cast/aluminum corner blocks suitable for Form IV enclosures.



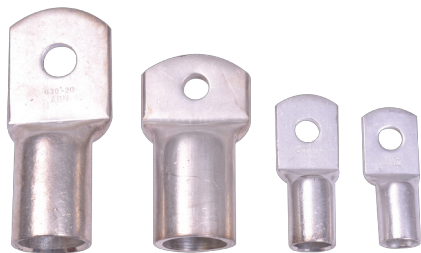
CORNER PIECE



# Electric Installation

## TIN PLATED COPPER LUGS

Tubular copper lugs manufactured using EC grade Copper tubes duly tin plated upto 800 sq mm size. Available for medium and heavy duty application.



COPPER LUGS

## ALUMINUM LUGS

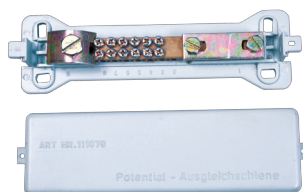
A comprehensive range of aluminum lugs duly plated forms part of our range.



ALUMINUM LUGS

## 13 WAY EARTH BLOCK FOR GERMAN MARKET

13 way brass earthing bar enclosed in an insulated housing.



13 WAY EARTH TERMINAL

## BIMETALLIC LUGS

Aluminum lugs with copper bush in various sizes.



BI-METALIC LUGS

## BRASS CABLE GLANDS-BW&CW-WITH EARTH TAG AND SHROUD

BW, CW, A1, A2, ALCO and wiping glands with earth tag, locknut and PVC shroud.



BRASS CABLE GLANDS

EARTH TAG AND SHROUD

## ALUMINUM CABLE GLANDS-WITH EARTH TAG AND SHROUD

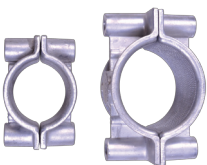
BW aluminum glands are available on request.



ALUMINIUM CABLE GLAND



EARTH CLAMP

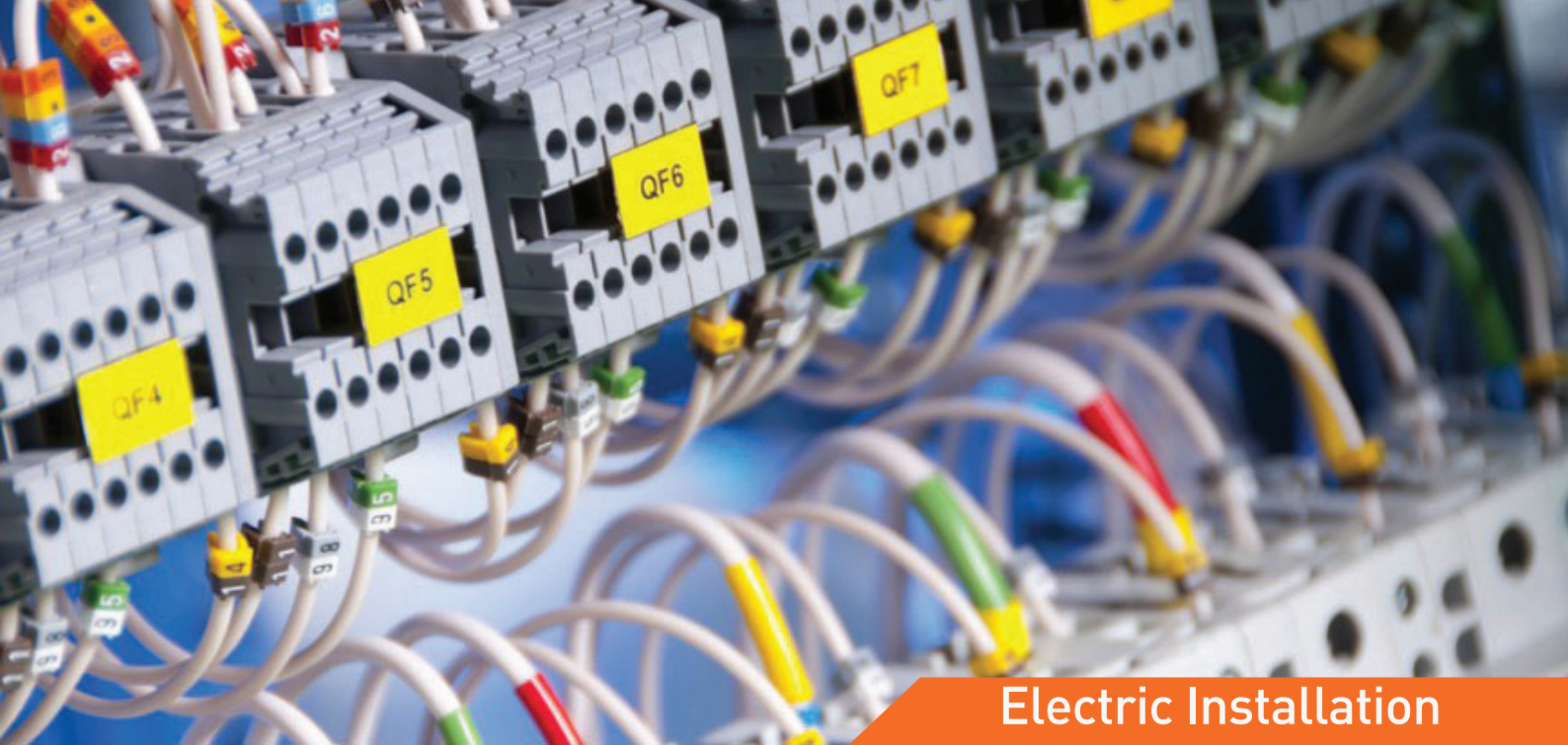


CABLE CLEAT CASTED



CABLE CLEAT- NYLON TREFOIL SHAPE





# Electric Installation

## COMPRESSION GLANDS

Nickel plated brass single/double compression glands for weatherproof and flameproof applications with IP66 and IP68 degree of protection. Details available on request.



COMPRESSION GLAND

COMPRESSION GLAND IP66 WATER PROOF AND FLAME PROOF

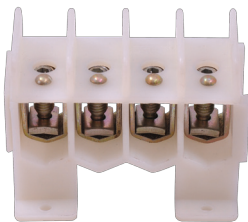
## COPPER COUPLER

Couplers provide protection from corrosion and are internally threaded.



COPPER COUPLER

## SLC TERMINAL



SLC TERMINAL

## HOUSE SERVICE CUTOUT



HOUSE SERVICE CUTOUT

## CABLE CLEAT SS STRAP

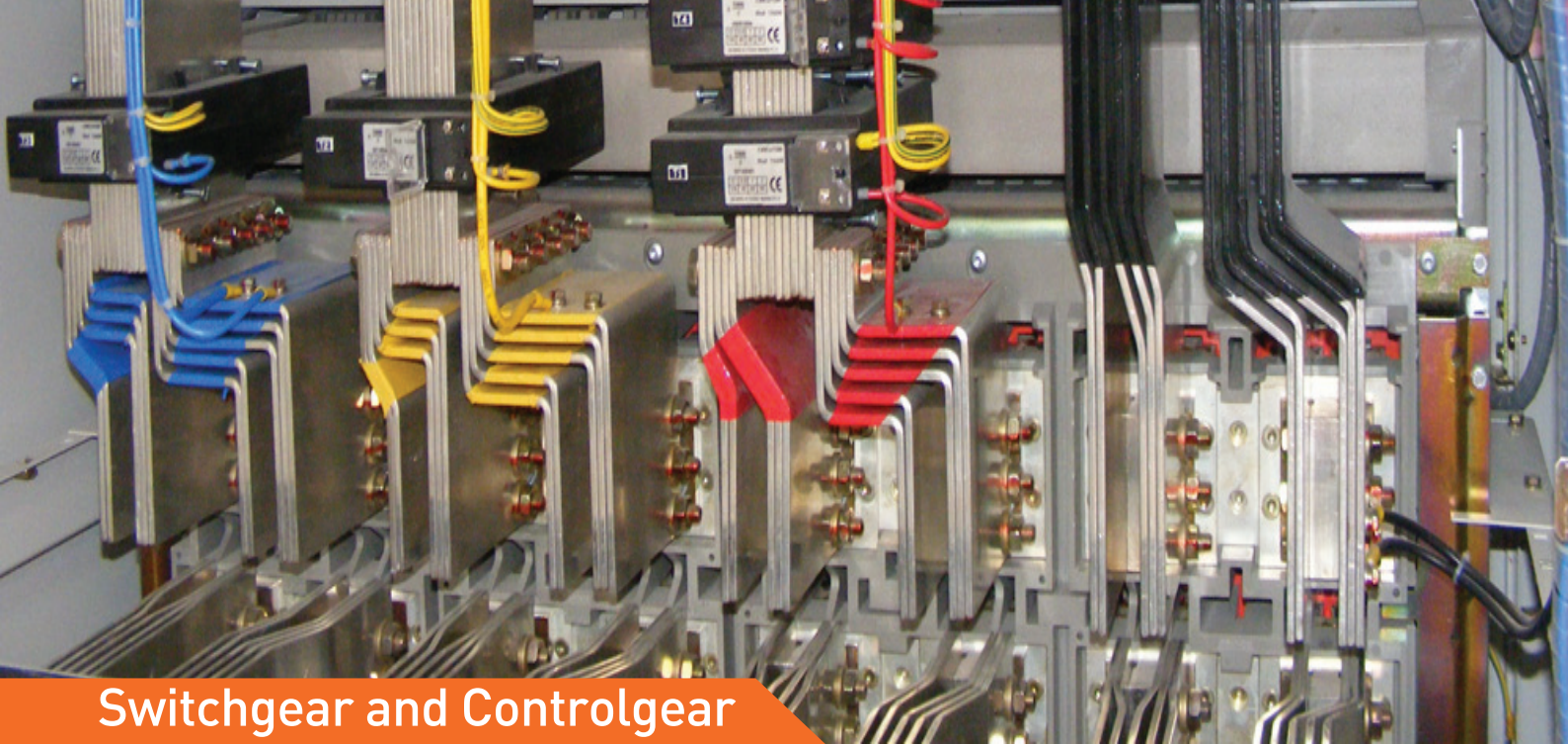


CABLE CLEAT SS STRAP

## METER SEAL



METER SEAL



# Switchgear and Controlgear

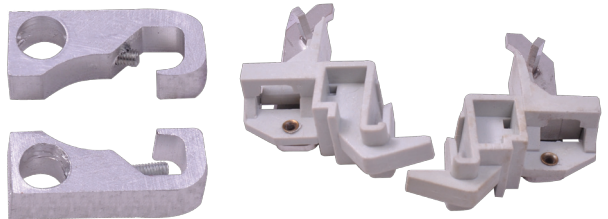
A wide range of switchgear and controlgear including contactors, capacitor duty contactors, isolators, changeover switches, pushbuttons, pilot lamps and MCBs with CE and UL accreditation from the world renowned C&S Electric Ltd are available through us.

## CAPACITOR DUTY CONTACTORS



## MCB LOCKDOG

MCB lockdog varieties for LH/RH application for locking of MCBs are on offer.



LOCK DOG

MCB LOCK DOG

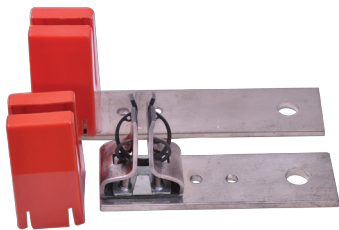
## PUSHBUTTONS PILOT LAMPS AND SELECTOR SWITCHES



PUSH BUTTONS & PILOT LAMPS

## MUSCAT CUTOUT

400 A cutout suitable for 400 A DIN type fuse with shroud in RYB configuration.



MUSCUT CUTOUT 400 A

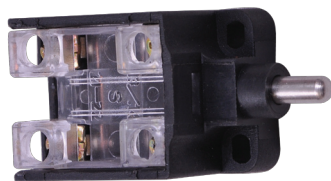
## MCBs



MCBs

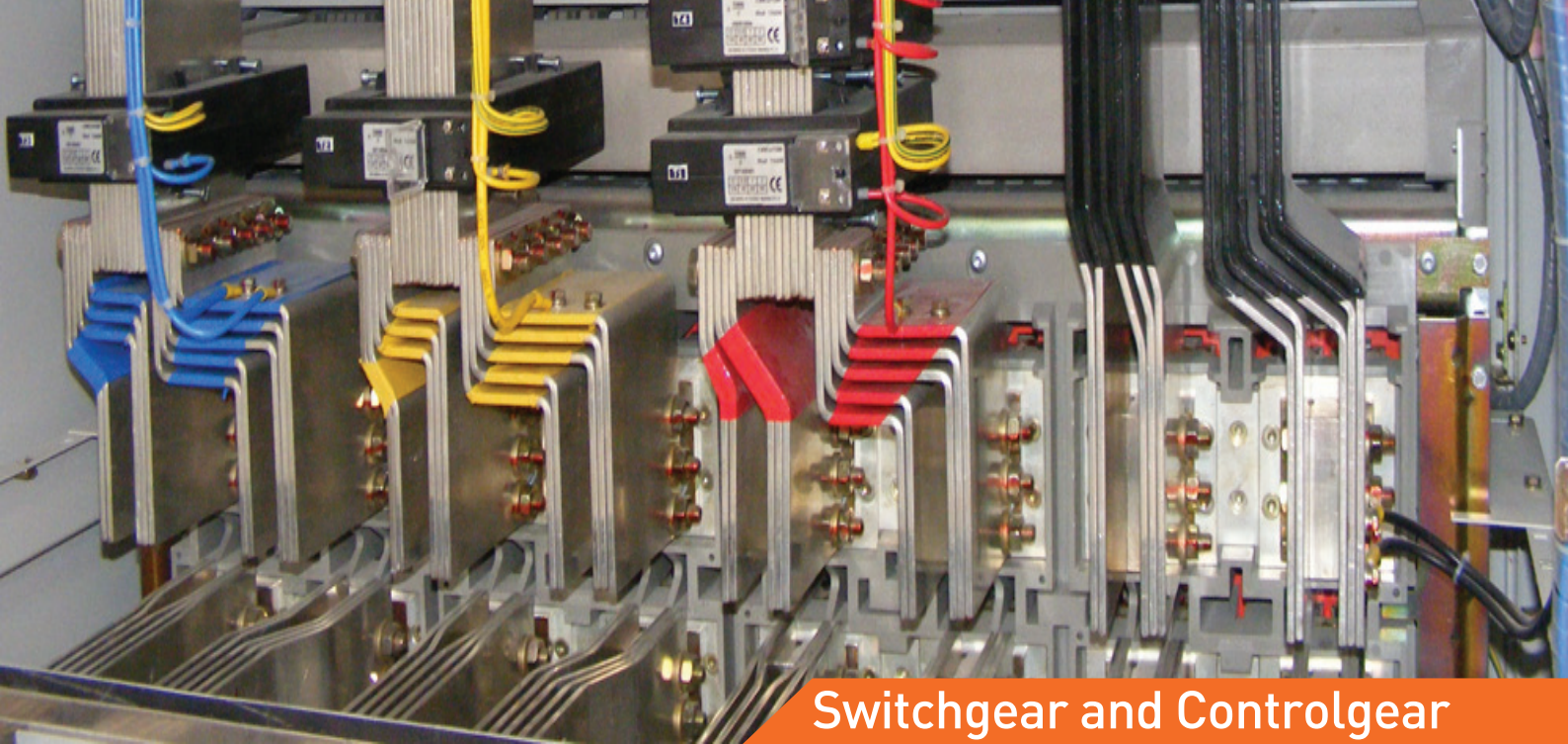
## DOOR SWITCH

Door switch with shroud and audible snap action.



DOOR SWITCH





# Switchgear and Controlgear

## ROTARY TYPE SELECTOR SWITCHES

Ammeter selector, voltmeter selector-manual off auto, 10 A finger touch proof with yellow-red or grey-black front plates suitable for 72x72/ 96x96 mm mounting.



ROTARY CAMP SWITCHES

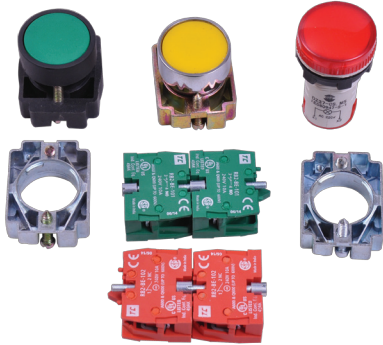
## IP 68 NYLON PUSHBUTTON WITH CARRIER

Nylon pushbutton with nylon carrier available in 22.5 mm dia, in various colours such as red, yellow, blue, black, green, etc and with arrow black/white in white/black background. Suitable for use in food industry and severe outdoor conditions.



IP 68 NYLON PUSHBUTTON WITH CARRIER

## PUSHBUTTON CARRIER



PUSHBUTTONS,CARRIER,CONTACT ELEMENT

## J TYPE FUSE CARRIER

Available in 82 and 92 mm versions suitable for J type fuses as per BS.



IP 68 NYLON PUSHBUTTON WITH CARRIER

## FUSE PULLER

Fuse puller common for all sizes with bakelite body in a robust design.



FUSE PULLER



FUSE BASE

## EMERGENCY SWITCH

30 MM dia mushroom red pushbutton switch wit twist to turn or snap type operation in ABS/die cast housing with NC contact in assembled form-CE/UL compliant.



EMERGENCY SWITCH

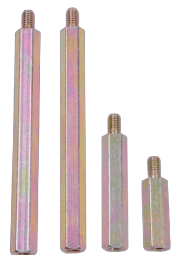




## Hardware

### SPACER BOLT-MS

M6 Hexagonal spacer bolts yellow passivated, trivalent finish are available in various lengths upto 140 mm.



SPACER BOLT - MS



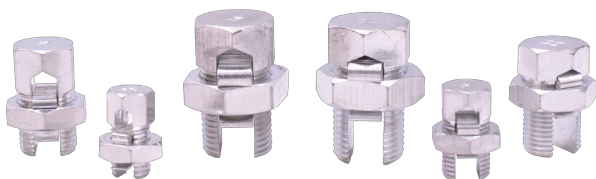
COPPER SPACER



COPPER SPACER

### LINE TAP

Brass line taps in various sizes upto 95 sq mm, zinc plated between 6 to 12 microns meeting stringent torque requirements.



LINE TAP

### NUT INSERT RIVET

This can be made in various configurations of diameters and lengths.



NUT INSERT RIVET

### BRASS BUSH

Male/female brass bush in light and heavy duty constructions as per customer requirements.



BRASS BUSH

### EYEBOLT

MS forged eyebolts upto M16 and lengths of 25/40 mm and duly zinc plated.



EYE BOLT

### SQUARE NUT

Square nuts upto 3 mm thick with threaded hole at center and dimensions as per customer needs are manufactured.



SQUARE NUT

### P NUT (EARTHING NUTS)

Brass P nuts suitable for fixing on brass cable glands of standard diameters like 20 mm, 25 mm, 32 mm, 40 mm, 50 mm, 63 mm and 75 mm can be undertaken if the buyer interest is of a reasonable quantity on a regular basis. They provide earthing by securing connections and increase safety.



BRASS P NUT



WING NUT



MS WING NUT

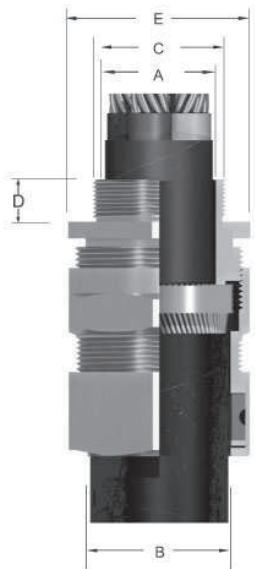




## Additional Information

### BRASS CABLE GLAND CW

- Size : 20 mm to 90 mm
- Standard : BS 6121
- Material : Brass BS 2874 CZ121 Pb3
- Finish : Brass Finish
- Accessories : Matching Accessories available like PVC Shrouds ,Lock Nuts, Earth Tag.
- Application
- For use with armored cable
  - Provides a seal on the outer sheath of the cable thus ensuring no damage to cable sheathing.
  - Degree of protection ie IP 54 etc whatever is applicable



| Gland Size | CABLE DIMENSIONS ACCOMODATED |                 |                 | GLAND DIMENSIONS |         |                         |                           |                     | E-Code |
|------------|------------------------------|-----------------|-----------------|------------------|---------|-------------------------|---------------------------|---------------------|--------|
|            | Under Armour Dia Max         | Overall Dia Max | Armour Wire Dia | Dia 'A'          | Dia 'B' | Metric Entry Thread 'C' | Minimum Thread Length 'D' | Across Flat 'E' Max |        |
| 20S        | 11.6                         | 15.8            | 0.9/1.25        | 12.3             | 17.0    | 20                      | 10                        | 24.00               | ACW20S |
| 20L        | 13.9                         | 19.5            | 0.9/1.25        | 14.3             | 20.3    | 20                      | 10                        | 27.17               | ACW20L |
| 25L        | 19.9                         | 26.0            | 0.9/1.25        | 20.8             | 26.9    | 25                      | 10                        | 34.30               | ACW25L |
| 32         | 25.2                         | 33.5            | 1.60/2.0        | 26.9             | 34.1    | 32                      | 10                        | 42.90               | ACW32  |
| 40L        | 32.1                         | 39.9            | 1.60/2.0        | 32.5             | 41.8    | 40                      | 15                        | 50.80               | ACW40  |
| 50S        | 39.5                         | 49.0            | 2.0/2.25        | 40.9             | 50.2    | 50                      | 15                        | 61.70               | ACW50S |
| 50L        | 43.2                         | 51.0            | 2.0/2.25        | 44.4             | 52.8    | 50                      | 15                        | 63.75               | ACW50L |
| 63S        | 50.6                         | 58.9            | 2.5             | 51.8             | 61.9    | 63                      | 15                        | 73.90               | ACW63S |
| 63L        | 55.9                         | 65.3            | 2.5             | 56.4             | 66.5    | 63                      | 15                        | 78.50               | ACW63L |
| 75S        | 61.9                         | 71.6            | 2.5             | 63.2             | 74.2    | 75                      | 20                        | 87.40               | ACW75S |
| 75L        | 67.9                         | 78.0            | 2.5             | 68.6             | 78.5    | 75                      | 20                        | 96.00               | ACW75L |

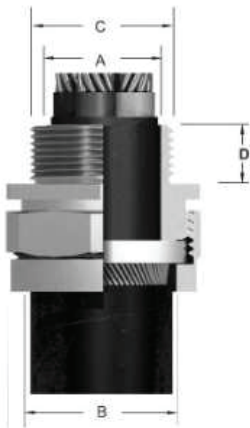
As design and development is a continuously evolving process dictated by market needs, the actual product may differ in dimensions compared to listed here.



# Additional Information

## BRASS CABLE GLAND BW (4 PART)

- Size : 20 mm to 90 mm
- Standard : BS 6121
- Application : Dry Indoor for use with all types of SWA Cable
- Function : Provide mechanical Cable Restention & Electrical Wire continuity via Armoured Wire.
- Material : Brass BS 2874 CZ121 Pb3
- Finish : Brass Finish
- Accessories : Matching Accessories available like PVC Shrouds, Lock Nuts, Earth Tag.



| Gland Size | CABLE DIMENSIONS ACCOMODATED | GLAND DIMENSIONS |         |                         |                           |                     | E-Code |
|------------|------------------------------|------------------|---------|-------------------------|---------------------------|---------------------|--------|
|            | Armour Wire Dia              | Dia 'A'          | Dia 'B' | Metric Entry Thread 'C' | Minimum Thread Length 'D' | Across Flat 'E' Max |        |
| 20S        | 0.9/1.25                     | 13.0             | 16.9    | 20                      | 10                        | 23.60               | ABW20S |
| 20L        | 0.9/1.25                     | 14.3             | 21.0    | 20                      | 10                        | 25.40               | ABW20L |
| 25S        | 1.25/1.60                    | 18.4             | 24.5    | 25                      | 10                        | 31.10               | ABW25S |
| 25L        | 1.25/1.60                    | 20.8             | 28.1    | 25                      | 10                        | 34.00               | ABW25I |
| 32         | 1.60/2.0                     | 26.7             | 33.7    | 32                      | 10                        | 40.40               | ABW32L |
| 40S        | 1.60/2.0                     | 30.5             | 37.6    | 40                      | 15                        | 44.90               | ABW40S |
| 40L        | 1.60/2.0                     | 32.7             | 41.1    | 40                      | 15                        | 48.70               | ABW40L |
| 50S        | 2.0/2.5                      | 40.6             | 48.6    | 50                      | 15                        | 57.40               | ABW50S |
| 50L        | 2.0/2.5                      | 44.4             | 53.8    | 50                      | 15                        | 61.00               | ABW50L |
| 63S        | 2.5                          | 51.3             | 60.7    | 63                      | 15                        | 70.10               | ABW63S |
| 63L        | 2.5                          | 56.3             | 65.5    | 63                      | 15                        | 74.80               | ABW63L |
| 75S        | 2.5                          | 62.2             | 72.4    | 75                      | 15                        | 84.30               | ABW75S |
| 75L        | 2.5                          | 68.2             | 78.4    | 75                      | 15                        | 90.10               | ABW75L |
| 90         | 2.5                          | 80.0             | 91.5    | 90                      | 15                        | 105.30              | ABW90  |

As design and development is a continuously evolving process dictated by market needs, the actual product may differ in dimensions compared to listed here.

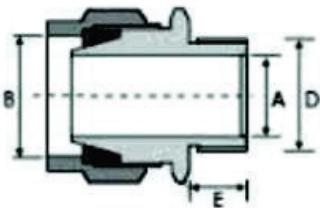




## Additional Information

### BRASS CABLE GLAND BW ( 2 PART)

- Size : 20 mm to 90 mm
- Standard : BS 6121
- Application : Dry Indoor for use with all types of SWA Cable
- Function : Provide mechanical Cable Restention & Electrical Wire continuity via Armoured Wire.
- Material : Brass BS 2874 CZ121 Pb3
- Finish : Brass Finish
- Accessories : Matching Accessories available like PVC Shrouds, Lock Nuts, Earth Tag, etc. as per the requirement



| Size | CABLE DIMENSIONS ACCOMODATED |                      |                    | GLAND DIMENSIONS    |        |                | Prod. Code |
|------|------------------------------|----------------------|--------------------|---------------------|--------|----------------|------------|
|      | Under Armour<br>Dia A Max    | Overall<br>Dia B Max | Armour<br>Wire Dia | ISO Entry<br>Thread |        |                |            |
|      | mm                           | mm                   | mm                 | Dia                 | Length | Across corners |            |
|      |                              |                      |                    | D mm                | E mm   |                |            |
| 160  | 8.6                          | 13.5                 | 0.9                | 16                  | 10     | 23             | ABW16      |
| 20S  | 12.3                         | 17                   | 0.90/1.25          | 20                  | 10     | 24             | ABW20S     |
| 20   | 14.3                         | 20                   | 0.90/1.25          | 20                  | 10     | 27             | ABW20      |
| 25S  | 18                           | 23.8                 | 1.25/1.60          | 25                  | 10     | 32.5           | ABW25S     |
| 25   | 20.4                         | 27                   | 1.25/1.60          | 25                  | 10     | 38.5           | ABW25      |
| 32   | 26.5                         | 33                   | 1.60/2.00          | 32                  | 10     | 45.5           | ABW32      |
| 40S  | 31                           | 37                   | 1.60/2.00          | 40                  | 10     | 50             | ABW40S     |
| 40   | 32.5                         | 43                   | 1.60/2.00          | 40                  | 15     | 54             | ABW40      |
| 50S  | 37.8                         | 48                   | 2.00/2.50          | 50                  | 15     | 65             | ABW50S     |
| 50   | 44                           | 53                   | 2.00/2.50          | 50                  | 15     | 69.5           | ABW50      |
| 63S  | 50.5                         | 60.5                 | 2.5                | 63                  | 15     | 77             | ABW63S     |
| 63   | 56.5                         | 65.5                 | 2.5                | 63                  | 15     | 85             | ABW63      |
| 75S  | 62.5                         | 72                   | 2.5                | 75                  | 15     | 95             | ABW75S     |
| 75   | 67.5                         | 78.5                 | 2.50/3.15          | 75                  | 15     | 99             | ABW75      |
| 90   | 80                           | 93                   | 3.15               | 90                  | 20     | 125            | ABW90      |

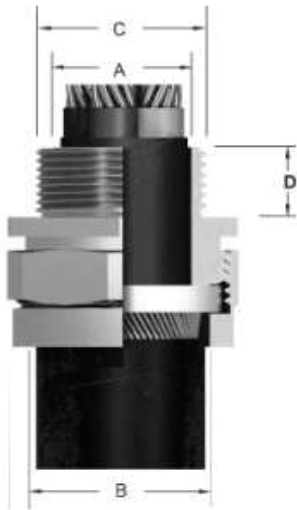
As design and development is a continuously evolving process dictated by market needs, the actual product may differ in dimensions compared to listed here.



# Additional Information

## ALUMINIUM CABLE GLAND BW (2 PART)

- Size : BW 50L
- Application : Dry Indoor for use with all types of SWA Cable
- Material : Aluminium
- Finish : Natural Finish
- Accessories : Matching Accessories available like PVC Shrouds, Lock Nuts, Earth Tag.



### Heavy Duty Aluminium Cable Gland

| Gland Size | CABLE DIMENSIONS ACCOMODATED | GLAND DIMENSIONS |         |         |                         |                           |                     | E-Code    |
|------------|------------------------------|------------------|---------|---------|-------------------------|---------------------------|---------------------|-----------|
|            | Armour Wire Dia              | L                | Dia 'A' | Dia 'B' | Metric Entry Thread 'C' | Minimum Thread Length 'D' | Across Flat 'E' Max |           |
| 50L        | 2.0/2.5                      | 35.0             | 44.4    | 52.8    | 50                      | 15                        | 70.0                | A-ALBW50L |

### Aluminium Cable Gland

| Gland Size | CABLE DIMENSIONS ACCOMODATED | GLAND DIMENSIONS |         |         |                         |                           |                     | E-Code    |
|------------|------------------------------|------------------|---------|---------|-------------------------|---------------------------|---------------------|-----------|
|            | Armour Wire Dia              | L                | Dia 'A' | Dia 'B' | Metric Entry Thread 'C' | Minimum Thread Length 'D' | Across Flat 'E' Max |           |
| 50L        | 2.0/2.5                      | 25.0             | 44.4    | 52.8    | 50                      | 15                        | 60.0                | A-ALBW50L |

As design and development is a continuously evolving process dictated by market needs, the actual product may differ in dimensions compared to listed here.

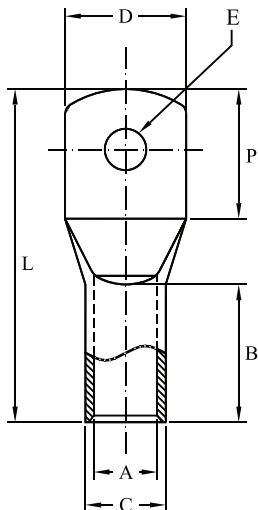




## Additional Information

### COPPER CABLE LUGS - STANDARD BARREL

MATERIAL : COPPER  
 FINISH ELECTRO-TINNED  
 FEATURES WITH INSPECTION HOLE



| CABLE<br>mm2 | E    | DIMENSIONS IN mm |      |    |    |    |    |  |    |
|--------------|------|------------------|------|----|----|----|----|--|----|
|              |      | A                | C    | D  | P  | B  | L  |  |    |
| 1.5          | 4.2  | 1.8              | 3.7  | 8  | 9  | 5  | 16 |  |    |
|              | 5.2  |                  |      |    | 10 |    |    |  |    |
| 2.5          | 4.2  | 2.4              | 4    | 8  | 9  | 7  | 18 |  |    |
|              | 5.2  |                  |      |    |    |    | 12 |  | 20 |
|              | 6.2  |                  |      |    |    |    |    |  |    |
| 4            | 5.2  | 3.1              | 4.8  | 10 | 11 | 7  | 21 |  |    |
|              | 6.2  |                  |      |    |    |    |    |  |    |
| 6            | 4.2  | 3.8              | 5.5  | 10 | 11 | 11 | 26 |  |    |
|              | 5.2  |                  |      |    |    |    |    |  |    |
|              | 6.2  |                  |      |    |    |    |    |  |    |
| 10           | 5.2  | 4.5              | 6.2  | 11 | 13 | 11 | 27 |  |    |
|              | 6.2  |                  |      | 12 | 17 |    | 11 |  | 30 |
|              | 8.2  |                  |      |    |    |    |    |  |    |
|              |      |                  |      |    |    |    |    |  |    |
| 16           | 5.2  | 5.4              | 7.1  | 11 | 15 | 13 | 32 |  |    |
|              | 6.2  |                  |      |    |    |    |    |  |    |
|              | 8.2  |                  |      |    |    |    |    |  |    |
| 25           | 5.2  | 6.8              | 8.8  | 13 | 15 | 12 | 32 |  |    |
|              | 6.2  |                  |      |    |    |    |    |  |    |
|              | 8.2  |                  |      |    |    |    |    |  |    |
| 35           | 5.2  | 8.2              | 10.6 | 15 | 20 | 13 | 38 |  |    |
|              | 6.2  |                  |      |    |    |    |    |  |    |
|              | 8.2  |                  |      |    |    |    |    |  |    |
|              | 10.5 |                  |      |    |    |    |    |  |    |
| 50           | 6.2  | 9.5              | 12.4 | 18 | 20 | 17 | 42 |  |    |
|              | 8.2  |                  |      |    |    |    |    |  |    |
|              | 10.5 |                  |      |    |    |    |    |  |    |
| 70           | 8.2  | 11.1             | 14.3 | 21 | 23 | 18 | 46 |  |    |
|              | 10.5 |                  |      |    |    |    |    |  |    |
|              | 13   |                  |      |    |    |    |    |  |    |

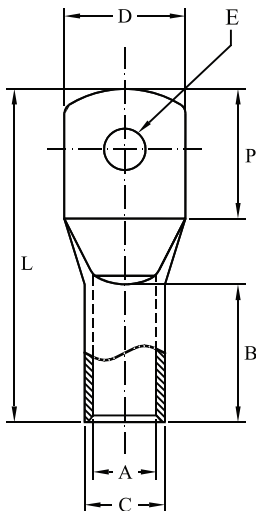
As design and development is a continuously evolving process dictated by market needs, the actual product may differ in dimensions compared to listed here.



# Additional Information

## COPPER CABLE LUGS - STANDARD BARREL

MATERIAL : COPPER  
 FINISH : ELECTRO-TINNED  
 FEATURES : WITH INSPECTION HOLE



| CABLE<br>mm <sup>2</sup> | ØE   | DIMENSIONS IN mm |      |    |    |    |     |  |
|--------------------------|------|------------------|------|----|----|----|-----|--|
|                          |      | A                | C    | D  | P  | B  | L   |  |
| 95                       | 10.5 | 13.5             | 17.4 | 25 | 28 | 20 | 55  |  |
|                          | 13   |                  |      |    |    |    |     |  |
| 120                      | 8.2  | 15               | 19.4 | 28 | 27 | 23 | 62  |  |
|                          | 10.5 |                  |      |    |    |    |     |  |
| 150                      | 13   | 16.5             | 21.2 | 30 | 35 | 26 | 70  |  |
|                          | 8.2  |                  |      |    |    |    |     |  |
| 185                      | 10.5 | 18.5             | 23.5 | 34 | 40 | 32 | 82  |  |
|                          | 13   |                  |      |    |    |    |     |  |
| 240                      | 10.5 | 21               | 26.5 | 38 | 40 | 38 | 92  |  |
|                          | 13   |                  |      |    |    |    |     |  |
| 300                      | 10.5 | 23.5             | 30   | 43 | 45 | 41 | 101 |  |
|                          | 13   |                  |      |    |    |    |     |  |
| 400                      | 14.7 | 27.5             | 35.5 | 52 | 50 | 48 | 113 |  |
|                          | 17   |                  |      |    |    |    |     |  |
| 500                      | 21   | 30               | 38   | 56 | 58 | 52 | 130 |  |
|                          | 17   |                  |      |    |    |    |     |  |
| 630                      | -    | 35               | 41.5 | 65 | 68 | 56 | 141 |  |
|                          | 21   |                  |      |    |    |    |     |  |
| 800                      | 17   | 39               | 50.6 | 72 | 77 | 78 | 175 |  |
|                          | 21   |                  |      |    |    |    |     |  |
| 1000                     | 17   | 43               | 56.2 | 80 | 90 | 90 | 200 |  |
|                          | 21   |                  |      |    |    |    |     |  |

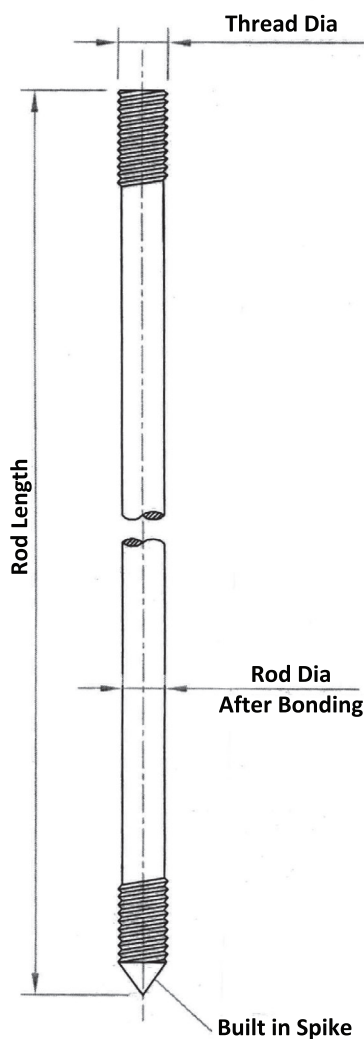
As design and development is a continuously evolving process dictated by market needs, the actual product may differ in dimensions compared to listed here.





## Additional Information

### COPPER BONDED SS EARTH ROD



| ROD DIA<br>AFTER BONDING<br>(mm) | THREAD DIA<br>(INCHES) | ROD LENGTH<br>(mm) |
|----------------------------------|------------------------|--------------------|
| 14.2                             | 5/8"                   | 1000               |
| 14.2                             | 5/8"                   | 1200               |
| 14.2                             | 5/8"                   | 1500               |
| 14.2                             | 5/8"                   | 1800               |
| 14.2                             | 5/8"                   | 2000               |
| 14.2                             | 5/8"                   | 2100               |
| 14.2                             | 5/8"                   | 2200               |
| 14.2                             | 5/8"                   | 2400               |
| 14.2                             | 5/8"                   | 3000               |
| 17.2                             | 3/4"                   | 1000               |
| 17.2                             | 3/4"                   | 1200               |
| 17.2                             | 3/4"                   | 1500               |
| 17.2                             | 3/4"                   | 1800               |
| 17.2                             | 3/4"                   | 2000               |
| 17.2                             | 3/4"                   | 2100               |
| 17.2                             | 3/4"                   | 2200               |
| 17.2                             | 3/4"                   | 2400               |
| 17.2                             | 3/4"                   | 3000               |

As design and development is a continuously evolving process dictated by market needs, the actual product may differ in dimensions compared to listed here.

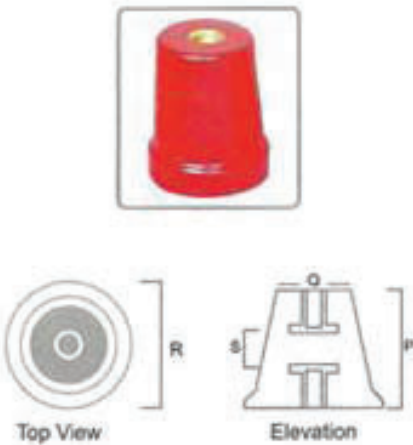


# Additional Information

## DMC INSULATORS

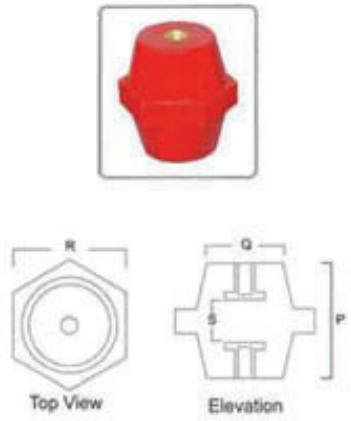
### CONICAL TYPE BUS BAR SUPPORTS

| CAT No. (Bush)     | Dimensions (mm) |    |    |    |
|--------------------|-----------------|----|----|----|
|                    | P               | Q  | R  | S  |
| 25x25 (1/4", M-6)  | 25              | 22 | 25 | 5  |
| 30x30 (1/4" M-6)   | 30              | 26 | 30 | 9  |
| 30x30 (5/16" M-8)  | 30              | 26 | 30 | 9  |
| 35x35 (5/16" M-8)  | 35              | 26 | 35 | 14 |
| 40x40 (5/16" M-8)  | 40              | 33 | 40 | 12 |
| 40x40 (3/8" M-10)  | 40              | 33 | 40 | 12 |
| 50x50 (3/8" M-10)  | 50              | 41 | 50 | 18 |
| 50x50 (1/2" M-12)  | 50              | 41 | 50 | 16 |
| 60x50 (1/2" M-12)  | 60              | 39 | 50 | 26 |
| 60x60 (1/2" M-12)  | 60              | 45 | 60 | 20 |
| 70x50 (1/2" M-12)  | 70              | 47 | 50 | 30 |
| 80x55 (1/2" M-12)  | 80              | 43 | 55 | 40 |
| 90x55 (1/2" M-12)  | 90              | 43 | 55 | 56 |
| 100x60 (1/2" M-12) | 100             | 43 | 60 | 66 |



### HEXAGONAL TYPE BUS BAR SUPPORTS

| CAT No. (Bush)   | Dimensions (mm) |    |    |    |
|------------------|-----------------|----|----|----|
|                  | P               | Q  | R  | S  |
| 15H (M-4)        | 15              | 12 | 14 | 4  |
| 20H (M-6)        | 20              | 14 | 18 | 6  |
| 25H (M-6)        | 25              | 21 | 25 | 8  |
| 30H (1/4" M6)    | 30              | 25 | 33 | 8  |
| 30H (5/16", M8)  | 30              | 25 | 33 | 8  |
| 35H (M-6)        | 35              | 24 | 30 | 16 |
| 40H (5/16", M-6) | 40              | 30 | 40 | 16 |
| 40H (M-8)        | 40              | 30 | 40 | 16 |
| 45H (M-8)        | 45              | 28 | 40 | 21 |
| 50H (M-8)        | 50              | 38 | 46 | 26 |
| 50H (3/8", M-10) | 50              | 36 | 46 | 18 |
| 60H (M-10)       | 60              | 38 | 50 | 28 |
| 60H (1/2", M-12) | 60              | 38 | 50 | 24 |







## Additional Information

### DMC INSULATORS

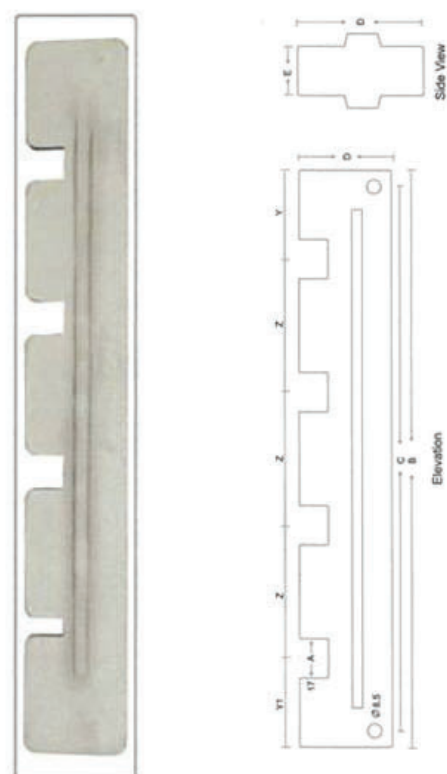
#### "L" TYPE BUS BAR SUPPORTS

| CAT No. (Bush) | Dimensions (mm) |    |    |    |    |
|----------------|-----------------|----|----|----|----|
|                | P               | Q  | R  | S  | T  |
| L-60           | 60              | 10 | 10 | 40 | 50 |
| L-85           | 85              | 10 | 10 | 40 | 50 |
| L-105          | 105             | 10 | 10 | 40 | 50 |
| L-125          | 125             | 10 | 10 | 40 | 50 |
| L-150          | 150             | 10 | 10 | 40 | 50 |



#### TRIPPLE POLE NEUTRAL BUS BAR SUPPORTS (TPN)

| CAT No.    | Dimensions (mm) |     |     |    |      |     |      |      |      |  |
|------------|-----------------|-----|-----|----|------|-----|------|------|------|--|
|            | A               | B   | C   | D  | E    | Z   | Y    | Y1   | X    |  |
| TPN-107/30 | 7.2             | 300 | 280 | 47 | 10   | 65  | 52.5 | 52.5 | NA   |  |
| TPN-111/30 | 11.0            | 300 | 280 | 47 | 10   | 65  | 52.5 | 52.5 | NA   |  |
| TPN-114/30 | 13.7            | 300 | 280 | 47 | 10   | 65  | 52.5 | 52.5 | NA   |  |
| TPN-107/35 | 7.2             | 350 | 328 | 50 | 10   | 75  | 62.5 | 62.5 | NA   |  |
| TPN-111/35 | 11.0            | 350 | 328 | 50 | 10   | 75  | 62.5 | 62.5 | NA   |  |
| TPN-114/35 | 13.7            | 350 | 328 | 50 | 10   | 75  | 62.5 | 62.5 | NA   |  |
| TPN-207/30 | 7.2             | 350 | 328 | 50 | 10   | 70  | 62   | 78.0 | 6.0  |  |
| TPN-211/35 | 11.0            | 350 | 328 | 50 | 10   | 70  | 62   | 78.0 | 9.5  |  |
| TPN-214/35 | 13.7            | 350 | 328 | 50 | 10   | 70  | 62   | 78.0 | 12.5 |  |
| TPN-107/40 | 7.2             | 400 | 360 | 60 | 11.5 | 90  | 60   | 70   | NA   |  |
| TPN-111/40 | 11.0            | 400 | 360 | 60 | 11.5 | 90  | 60   | 70   | NA   |  |
| TPN-114/40 | 13.7            | 400 | 360 | 60 | 11.5 | 90  | 60   | 70   | NA   |  |
| TPN-207/40 | 7.2             | 400 | 360 | 60 | 11.5 | 90  | 60   | 70   | NA   |  |
| TPN-211/40 | 11.0            | 400 | 360 | 60 | 11.5 | 90  | 60   | 70   | NA   |  |
| TPN-214/40 | 13.7            | 400 | 360 | 60 | 11.5 | 90  | 60   | 70   | NA   |  |
| TPN-107/42 | 7.2             | 420 | 396 | 60 | 11.5 | 100 | 60   | 60.0 | NA   |  |
| TPN-111/42 | 11.0            | 420 | 396 | 60 | 11.5 | 100 | 60   | 60.0 | NA   |  |
| TPN-114/42 | 13.7            | 420 | 396 | 60 | 11.5 | 100 | 60   | 60.0 | NA   |  |
| TPN-207/42 | 7.2             | 420 | 396 | 60 | 11.5 | 100 | 60   | 60.0 | NA   |  |
| TPN-211/42 | 11.0            | 420 | 396 | 60 | 11.5 | 100 | 60   | 60.0 | NA   |  |
| TPN-214/42 | 13.7            | 420 | 396 | 60 | 11.5 | 100 | 60   | 60.0 | NA   |  |



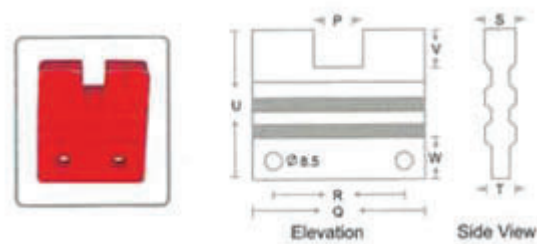


# Additional Information

## DMC INSULATORS

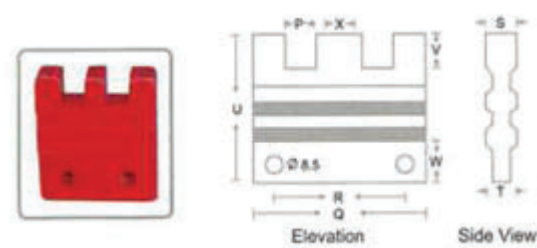
### ONE WAY FINGER TYPE SUPPORTS

| CAT No.  | Dimensions (mm) |    |    |    |    |    |    |    |
|----------|-----------------|----|----|----|----|----|----|----|
|          | P               | Q  | R  | S  | T  | U  | V  | W  |
| 1x6 (S)  | 7.5             | 50 | 22 | 15 | 10 | 70 | 15 | 27 |
| 1x10 (S) | 11.5            | 50 | 22 | 15 | 10 | 70 | 15 | 27 |
| 1x12 (S) | 13.5            | 50 | 22 | 15 | 10 | 70 | 15 | 27 |
| 1x6 (W)  | 7.5             | 60 | 32 | 15 | 10 | 70 | 15 | 27 |
| 1x10 (W) | 11.5            | 60 | 32 | 15 | 10 | 70 | 15 | 27 |
| 1x12 (W) | 13.5            | 60 | 32 | 15 | 10 | 70 | 15 | 27 |
| 1x6 (K)  | 7.5             | 70 | 40 | 20 | 16 | 70 | 15 | 27 |
| 1x10 (K) | 11.5            | 70 | 40 | 20 | 16 | 70 | 15 | 27 |
| 1x12 (K) | 13.5            | 70 | 40 | 20 | 16 | 70 | 15 | 27 |



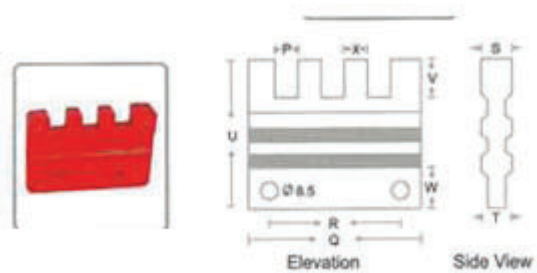
### TWO WAY FINGER TYPE SUPPORTS

| CAT No.  | Dimensions (mm) |    |    |    |    |    |    |    |      |
|----------|-----------------|----|----|----|----|----|----|----|------|
|          | P               | Q  | R  | S  | T  | U  | V  | W  | X    |
| 2x6 (W)  | 7.5             | 60 | 32 | 15 | 10 | 70 | 15 | 27 | 6.0  |
| 2x10 (W) | 11.5            | 60 | 32 | 15 | 10 | 70 | 15 | 27 | 9.5  |
| 2x12 (W) | 13.5            | 60 | 32 | 15 | 10 | 70 | 15 | 27 | 12.0 |
| 2x6 (K)  | 7.5             | 70 | 40 | 20 | 16 | 70 | 15 | 27 | 6.0  |
| 2x10 (K) | 11.5            | 70 | 40 | 20 | 16 | 70 | 15 | 27 | 9.5  |
| 2x12 (K) | 13.5            | 70 | 40 | 20 | 16 | 70 | 15 | 27 | 12.0 |



### THREE WAY FINGER TYPE SUPPORTS

| CAT No.   | Dimensions (mm) |     |    |    |    |    |    |    |      |
|-----------|-----------------|-----|----|----|----|----|----|----|------|
|           | P               | Q   | R  | S  | T  | U  | V  | W  | X    |
| 3x6 (W)   | 7.5             | 60  | 32 | 15 | 10 | 70 | 15 | 27 | 6.0  |
| 3x10 (W)  | 11.5            | 100 | 50 | 15 | 10 | 70 | 15 | 27 | 9.5  |
| 3x12 (W)  | 13.5            | 100 | 50 | 15 | 10 | 70 | 15 | 27 | 12.0 |
| 3x6 (K)   | 7.5             | 70  | 50 | 20 | 16 | 70 | 15 | 27 | 6.0  |
| 3x10 (K)  | 11.5            | 100 | 50 | 20 | 16 | 70 | 15 | 27 | 9.5  |
| 3x12 (K)  | 13.5            | 100 | 50 | 20 | 16 | 70 | 15 | 27 | 12.0 |
| 3x12 (XK) | 13.5            | 130 | 80 | 20 | 16 | 70 | 15 | 27 | 12.0 |





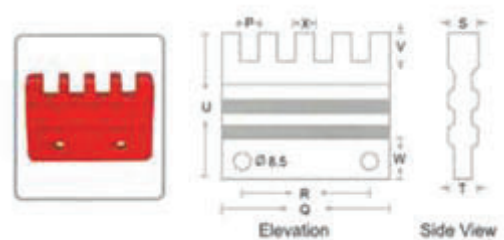


## Additional Information

### DMC INSULATORS

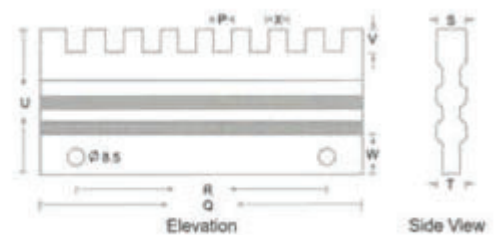
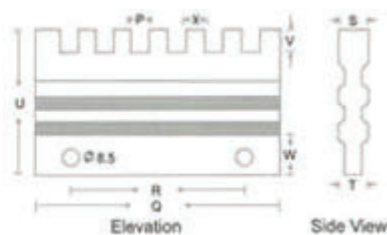
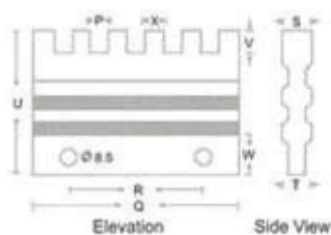
#### FOUR WAY FINGER TYPE SUPPORTS

| CAT No.   | Dimensions (mm) |     |    |    |    |    |    |    |      |
|-----------|-----------------|-----|----|----|----|----|----|----|------|
|           | P               | Q   | R  | S  | T  | U  | V  | W  | X    |
| 4x6 (W)   | 7.5             | 100 | 50 | 15 | 10 | 70 | 15 | 27 | 6.0  |
| 4x10 (W)  | 11.5            | 100 | 50 | 15 | 10 | 70 | 15 | 27 | 9.5  |
| 4x10 (XW) | 11.5            | 130 | 80 | 15 | 10 | 70 | 15 | 27 | 9.5  |
| 4x12 (W)  | 13.5            | 130 | 80 | 15 | 10 | 70 | 15 | 27 | 12.0 |
| 4x6 (K)   | 7.5             | 100 | 50 | 20 | 16 | 70 | 15 | 27 | 6.0  |
| 4x10 (K)  | 11.5            | 100 | 50 | 20 | 16 | 70 | 15 | 27 | 9.5  |
| 4x10 (XK) | 11.5            | 130 | 80 | 20 | 16 | 70 | 15 | 27 | 9.5  |
| 4x12 (K)  | 13.5            | 130 | 80 | 20 | 16 | 70 | 15 | 27 | 12.5 |



#### FIVE/SIX/EIGHT WAY FINGER TYPE SUPPORTS

| CAT No.  | Dimensions (mm) |     |    |    |    |    |    |    |     |
|----------|-----------------|-----|----|----|----|----|----|----|-----|
|          | P               | Q   | R  | S  | T  | U  | V  | W  | X   |
| 5x6 (K)  | 7.5             | 100 | 50 | 20 | 16 | 70 | 15 | 27 | 6.0 |
| 5x10 (K) | 11.5            | 130 | 50 | 20 | 16 | 70 | 15 | 27 | 9.5 |
| 6x6 (K)  | 7.5             | 100 | 80 | 20 | 16 | 70 | 15 | 27 | 6.0 |
| 8x6 (K)  | 7.5             | 130 | 80 | 20 | 16 | 70 | 15 | 27 | 6.0 |
| 5x6 (XK) | 7.5             | 130 | 80 | 20 | 16 | 70 | 15 | 27 | 6.0 |
| 6x6 (XK) | 7.5             | 130 | 80 | 20 | 16 | 70 | 15 | 27 | 6.0 |



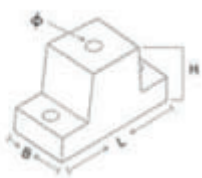


# Additional Information

## DMC INSULATORS

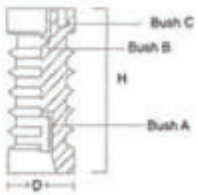
### SINGLE POLE BUS BAR SUPPORTS

| CAT No.           | Dimensions (mm) |    |    |        |
|-------------------|-----------------|----|----|--------|
|                   | L               | B  | H  | O      |
| SP-30             | 55              | 26 | 30 | 6,8    |
| SP-30 (Nut /Bolt) | 55              | 26 | 24 | 6      |
| SP-35             | 87              | 40 | 35 | 8      |
| SP-40             | 74              | 35 | 40 | 8      |
| SP-55             | 110             | 50 | 55 | 12, 16 |
| SP-65             | 110             | 53 | 65 | 16     |
| SP-6 (Nut/Bolt)   | 52              | 24 | 26 | 6      |
| SP-8 (Nut/Bolt)   | 63              | 29 | 46 | 8      |



## H.T. SUPPORTS

| CAT No.   | Dimensions (mm) |     |        |        |           |
|-----------|-----------------|-----|--------|--------|-----------|
|           | D               | H   | Bush A | Bush B | Bush C    |
| 2.2 KV    | 64              | 53  | 10     | 10     |           |
| 3.3 KV    | 60              | 75  | 12     | 10     | 2 nos x 6 |
| 6.6 KV    | 60              | 90  | 12     | 10     | 2 nos x 6 |
| 11 KV (S) | 61              | 130 | 16     | 10     | 2 nos x 6 |
| 11 KV (B) | 75              | 130 | 16     | 10     | 2 nos x 8 |



## TERMINAL CONNECTOR

| CAT No.               | Dimensions (mm) |    |    |           |
|-----------------------|-----------------|----|----|-----------|
|                       | L               | B  | T  | Bolt Size |
| TP-1 (63 A)           | 90              | 24 | 10 | 6         |
| TPN-1 (63 A)          | 120             | 25 | 10 | 6         |
| TP-2 (100 A)          | 130             | 32 | 12 | 8         |
| TPN-2 (100 A)         | 175             | 32 | 12 | 8         |
| TPN-1 Special (100 A) | 120             | 25 | 15 | 8         |
| TS8-3 (63 A)          | 120             | 25 | 10 | 6         |
| TS8-4 (63 A)          | 150             | 27 | 10 | 6         |







# Additional Information

## DMC INSULATORS

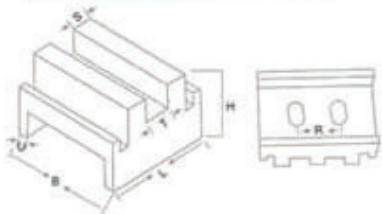
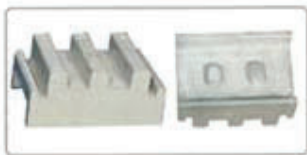
### NEUTRAL LINKS

| CAT No.  | Dimensions (mm) |    |    |
|----------|-----------------|----|----|
|          | L               | B  | H  |
| NL - 16A | 63              | 15 | 14 |
| NL - 32A | 58              | 15 | 13 |
| NL -63 A | 78              | 20 | 15 |
| NL-100A  | 102             | 27 | 20 |



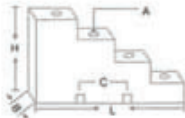
## GRIP TYPE BUS BAR SUPPORTS

| CAT No. | Dimensions (mm) |    |    |   |     |   |    |
|---------|-----------------|----|----|---|-----|---|----|
|         | L               | B  | H  | S | T   | U | R  |
| GP-106  | 40              | 46 | 30 | 5 | .5  | 4 | 25 |
| GP-110  | 47              | 46 | 30 | 9 | 11  | 4 | 25 |
| GP-206  | 51              | 46 | 30 | 5 | 8.5 | 4 | 25 |
| GP-210  | 67              | 46 | 30 | 9 | 11  | 4 | 25 |
| GP-306  | 61.5            | 45 | 30 | 5 | 8.5 | 4 | 25 |
| GP-406  | 75.5            | 46 | 30 | 5 | 8.5 | 4 | 25 |

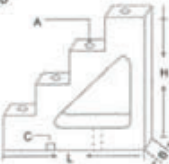


## STEP TYPE BUS BAR SUPPORTS

| CAT No.   | Dimensions (mm) |      |      |        |        |
|-----------|-----------------|------|------|--------|--------|
|           | L               | B    | H    | Bush A | Bush C |
| STEP - 20 | 100             | 20.5 | 55.5 | 6 mm   | 8 mm   |
| STEP-30   | 132.5           | 28   | 133  | 8 mm   | 10mm   |



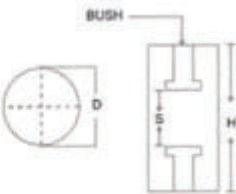
STEP-20



STEP-30

## CYLINDRICAL TYPE BUS BAR SUPPORTS

| CAT No. (Bush) | Dimensions (mm) |    |    |
|----------------|-----------------|----|----|
|                | L               | B  | H  |
| CYL-20 (M-5)   | 20              | 20 | 7  |
| CYL-45 (M-6)   | 45              | 30 | 18 |
| CYL-60 (M-6)   | 60              | 30 | 33 |
| CYL-75 (M-6)   | 75              | 30 | 48 |



BUSH



# Additional Information

## PVC TRUNKING

| Description          | WxH   |
|----------------------|-------|
| PVC Slotted Trunking | 25x25 |
| PVC Slotted Trunking | 25x40 |
| PVC Slotted Trunking | 25x60 |
| PVC Slotted Trunking | 40x40 |
| PVC Slotted Trunking | 40x60 |
| PVC Slotted Trunking | 60x60 |
| PVC Slotted Trunking | 60x80 |
| PVC Slotted Trunking | 40x80 |

## FILTERS

| Code    | Description   |
|---------|---|
| AFL-001 | Airvent   |
| AFL-002 | 130x130 mm Surface Mounting   |
| AFL-003 | 130x130 mm Snap Fitting   |
| AFL-004 | 203x203 mm Snap Types   |
| AFL-005 | 203x203 mm Snap Fitting<br>(with provision for mounting axial flow fan) |
| AFL-006 | 230x230 mm Surface Mounting   |
| AFL-007 | 320x325 mm Snap Fitting   |
| AFL-008 | Adapter for Fan Mounting  |
| AFL-009 | 184x184 mm Surface Mounting   |
| AFL-010 | 256x256 mm Snap Fitting   |
| AFL-011 | 256x256 mm Snap Fitting with Fan Mounting                               |

\*All filters supplied with gaskets for IP55.

## HINGES

| Hinge Code | Description  |
|------------|--|
| AHN-001    | Concealed Hinge 20mm                                   |
| AHN-002    | Concealed Hinge 26mm                                   |
| AHN-003    | Concealed Hinge 20mm Weld on                           |
| AHN-004    | Concealed Hinge 120 degrees                            |
| AHN-004A   | Small Size   |
| AHN-005    | Zinc/Die cast Hinge 180 degrees                        |
| AHN-006    | MS Hinge-Big   |
| AHN-007    | MS Hinge-Small   |
| AHN-008    | Spring Loaded Hinge                                    |
| AHN-009    | Zinc die cast hinge chrome plated<br>80 mm with MS pin |
| AHN-009A   | Zinc die cast hinge chrome plated<br>35 mm with MS pin |
| AHN-009B   | Zinc die cast hinge chrome plated<br>60 mm with MS pin |
| AHN-010    | U Hinge (20 mm, 22 mm and 25 mm)                       |
| AHN-011    | Zinc die cast hinge 180 degree-big                     |
| AHN-012    | 120 degree hinge pull type (Single Hole)               |
| AHN-012A   | 120 degree hinge with double hole                      |
| AHN-013    | Screw On Hinge   |
| AHN-014    | Brass hinge with SS pin-chrome plated                  |





## C&S Electric Products

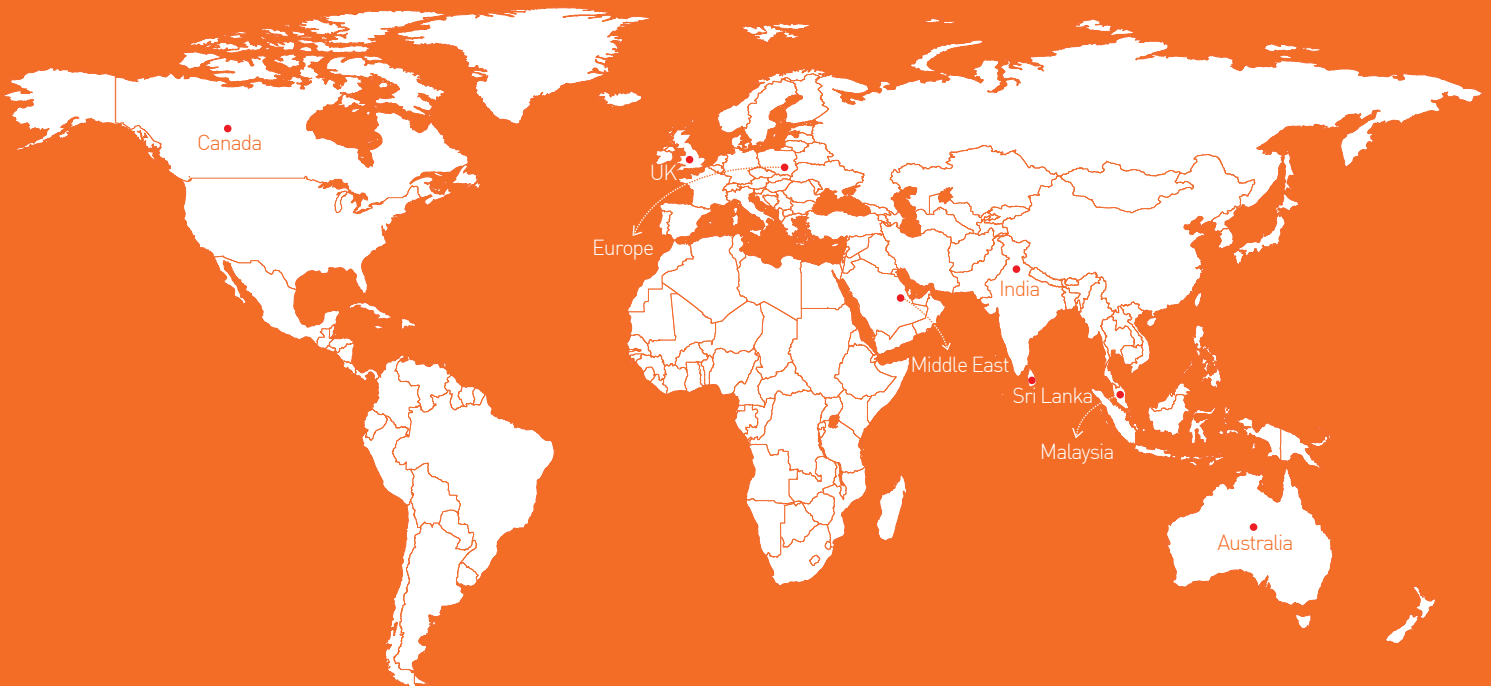
We offer the widest, most comprehensive UL, CE & CSA Certified LV Product Range complying with the latest specifications some of which are shown below.



Your trusted back office in India

**Aarvin International** exports to the following countries:

- Canada
- UK
- Europe
- Australia
- Middle East
- Malaysia
- Sri Lanka



**aarvin**  
**international**

Your trusted back office in India

342 A, Sector 14, Gurgaon 122 001, Haryana, India.

Tel: +91 124 408 14 13 ; Mobile: +91 98 100 56 723

Email: [sales@aarvininternational.com](mailto:sales@aarvininternational.com); [vijay@aarvininternational.com](mailto:vijay@aarvininternational.com) ; [arvin\\_321@yahoo.co.in](mailto:arvin_321@yahoo.co.in)

Websites: International: [www.aarvininternational.com](http://www.aarvininternational.com) ; India: [www.aarvininternational.co.in](http://www.aarvininternational.co.in)